

Sublime

INSPIRING AWE

GALLERIA
8TH FLOOR
UB CITY

presents

Ripples

Where every thought has an impact

By **Rashmi Soni**

Open Day
5th August
11 AM to 8 PM

5th Aug
To
2th Sep

Scan to know more



Water transparency and fluidity always attracts me, I can sit hours and watch it flowing continuously. Every time, when those ripples are creating different shapes and patterns, it gives me energy to move forward with my full potential.

I decided to paint water and chose watercolors as the medium, as it is very challenging.

I have visited many places to feel the real effect of reflections and transparency of water.

I painted scenes from river Sindhu, Jhelum, Tapti, Betwa, Kaveri and small streams near Pangong lake.

I painted lake Tahoe and painting, 'Heading Home' is a Taiwan Shore.

I really loved painting this water series and I hope you will enjoy it as much as I enjoyed painting it.

Sublime

INSPIRING AWE

GALLERIA
8TH FLOOR
UB CITY



Bangalore's Gallery in the sky

Sublime Galleria is a professionally managed, dynamic meeting ground for upcoming artist, art connoisseurs and collectors. Our artists represent a cross section of styles, medium, techniques and forms, which together define the artistic sensibilities that are evolving today. Sublime is on a mission to further the cause of the arts and also sees itself as a dynamic crucible for the next generation to develop and showcase their talent. Sublime reaches out to upcoming artists and offers them a great platform to showcase their talents and make their body of work accessible to Bangalore art community.

We also organize regular workshops for children in various creative and artistic field which include Visual Arts, Theatre, Music, Dance and more. Our recent initiative Sublime Art Ed empower schools and teachers to inspire creativity in children. Sublime Art Ed wants to see an India where every child's creativity is nurtured through the arts.

Sublime also conducts Art Bengaluru, the city's largest art festival featuring a diverse and international selection of art and artists. The latest edition featured over 20 artists and consulates from all over India. Please see the last page for more information.

About the Artist – Rashmi Soni



Rashmi Soni is a master in Political Science and had been working as a professor since many years now she is an established, award winning Internationally renowned contemporary artist. Her art works displayed in many National and International art galleries. Her works are often realistic and figurative in style.

In her formative year she was inspired by classical artists like Anthony Ryder and Michele Angelo, which led to adopting art style that tended towards realism. Nevertheless, she developed her own distinctive flavor of realism with loose strokes and vivid colors. She has special expertise in painting water, architectural landscapes and painting portraits in both watercolors and oil color medium. She is founder and director of Shiny Colors based out in HSR Layout Bangalore where she is grooming many emerging artists.

Artist Expression

Water transparency and fluidity always attracts me, I can sit hours and watch it flowing continuously. Every time, when those ripples are creating different shapes and patterns, it gives me energy to move forward with my full potential.

I decided to paint water and chose watercolors as the medium, as it is very challenging. I have visited many places to feel the real effect of reflections and transparency of water. I painted scenes from river Sindhu, Jhelum, Tapti, Betwa, Kaveri and small streams near Pangong lake. I painted lake Tahoe and painting, 'Heading Home' is a Taiwan Shore. I have even painted the water puddles and reflection of trees and sky in it. You can see the bottom too through the transparent water in it. I really loved painting this water series and I hope you will enjoy it as much as I enjoyed painting it.

Thank you for being a part of my painting exhibition - Ripples.



Ripples
36cm X 56cm
Watercolors
Rs. 62720/-



Near Shore
36cm X 56cm
Watercolors
Rs. 62720/-



Shimmer
36cm X 56cm
Watercolors
Rs. 62720/-



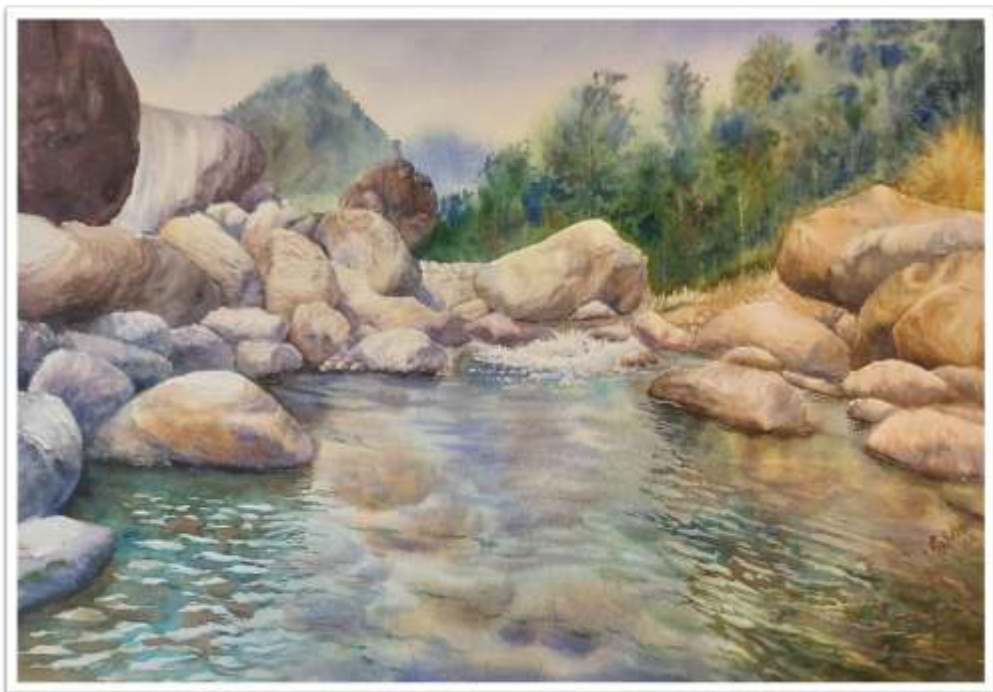
Aqua
36cm X 56cm
Watercolors
Rs. 54880/-



Sway
36cm X 56cm
Watercolors
Rs. 47040/-



Flutter
36cm X 56cm
Watercolors
Rs. 54880/-



Alone
36cm X 56cm
Watercolors
Rs. 54880/-



Bottom
36cm X 56cm
Watercolors
Rs. 54880/-



Surface
36cm X 56cm
Watercolors
Rs. 62720/-



Waves
59cm X 44cm
Watercolors
Rs. 54880/-



Evening Shore
36cm X 56cm
Watercolors
Rs. 47040/-



Awaiting
36cm X 56cm
Watercolors
Rs. 54880/-



Flowers
36cm X 56cm
Watercolors
Rs. 47040/-



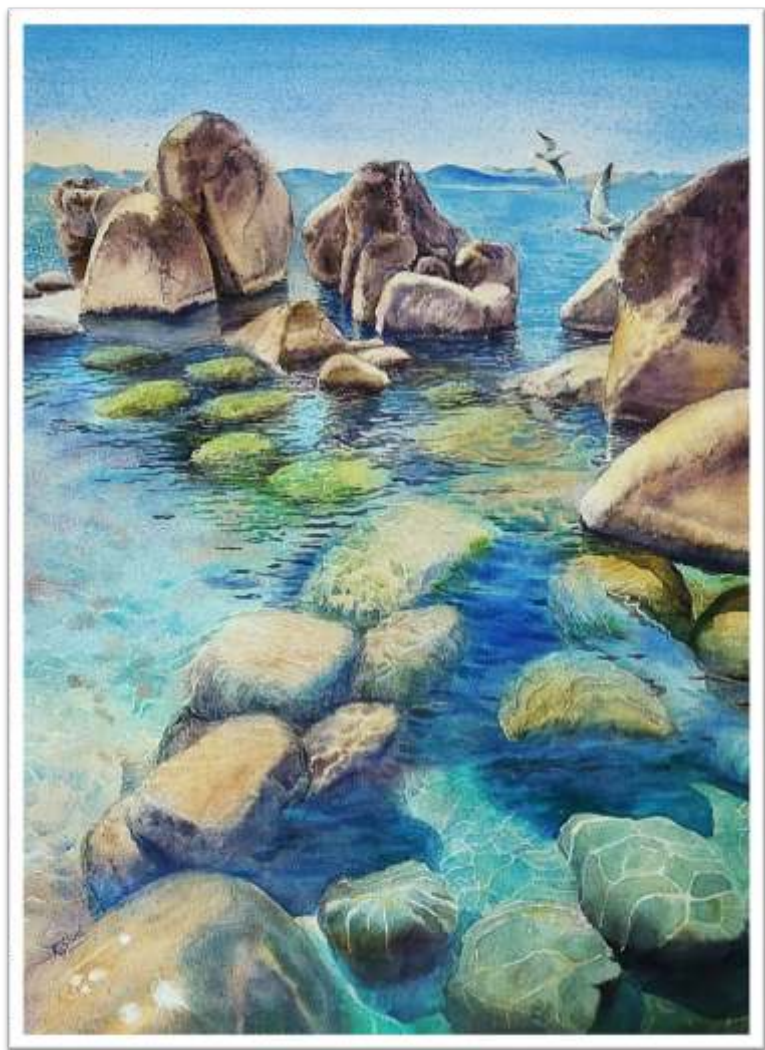
Splash
36cm X 56cm
Watercolors
Rs. 54880/-



Contemplation
76cm X 58cm
Watercolors
Rs. 78400/-



Day Out
59cm X 44cm
Watercolors
Rs. 70560/-



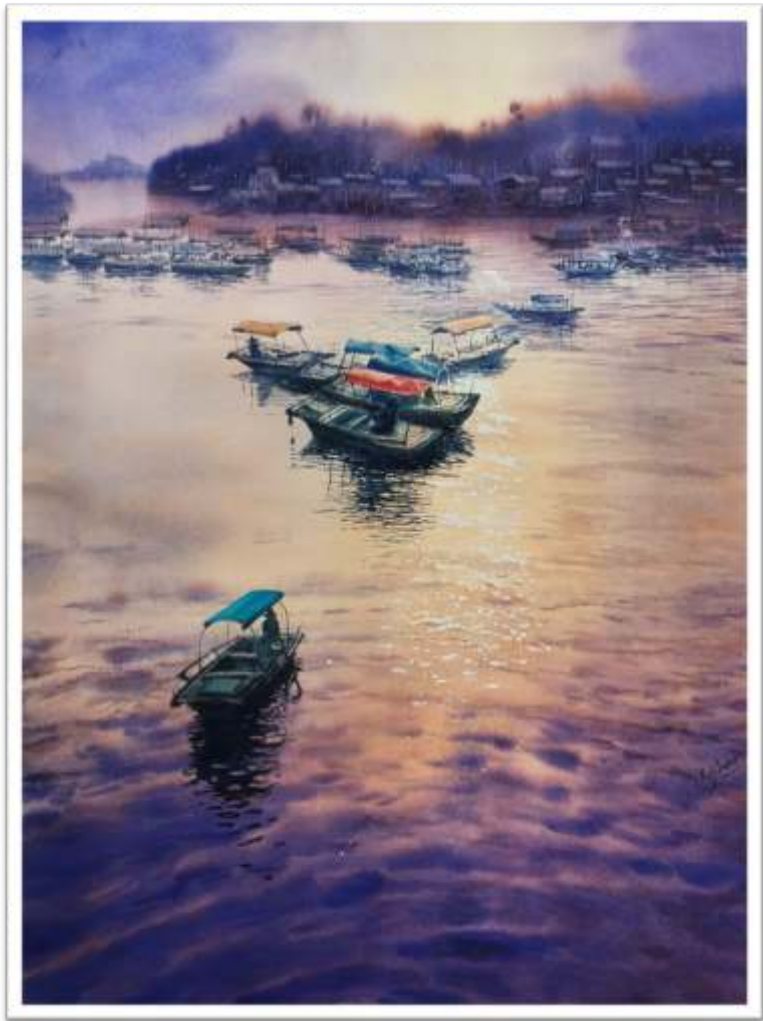
Turquoise
76cm X 58cm
Watercolors
Rs. 78400/-



Transparent
76cm X 58cm
Watercolors
Rs. 78400/-



Lake Tahoe
76cm X 58cm
Watercolors
Rs. 78400/-



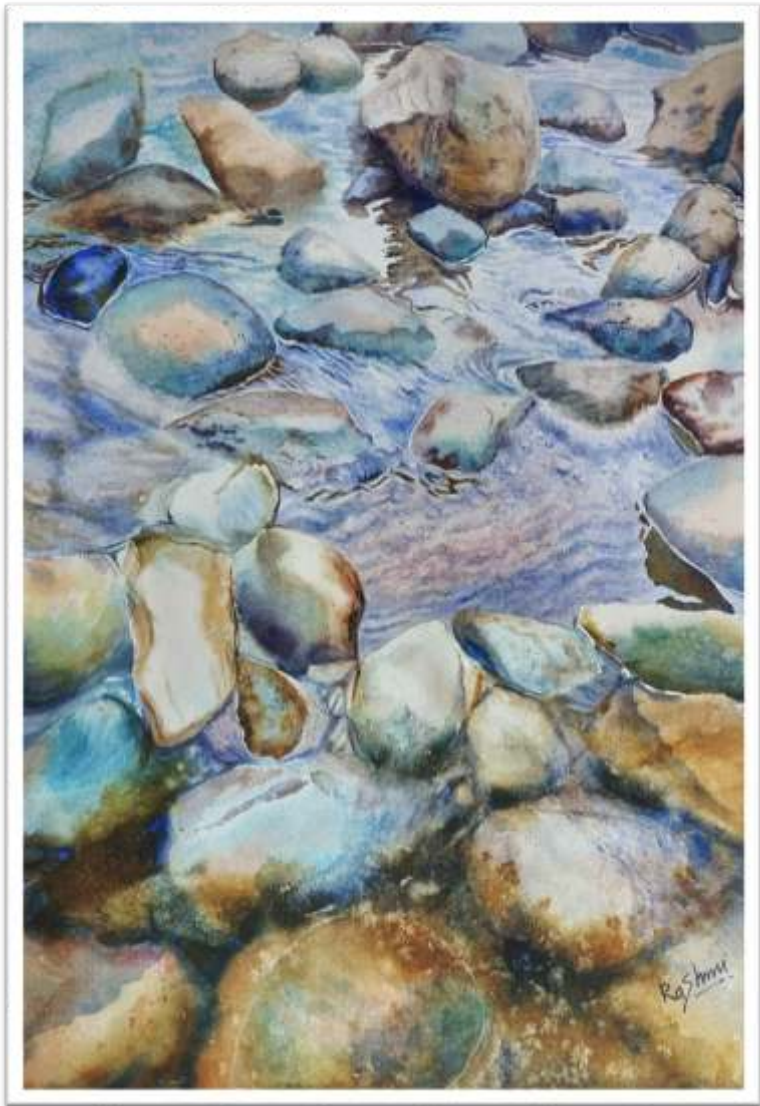
Heading Home
76cm X 58cm
Watercolors
Rs. 78400/-



Reflections
36cm X 56cm
Watercolors
Rs. 54880/-



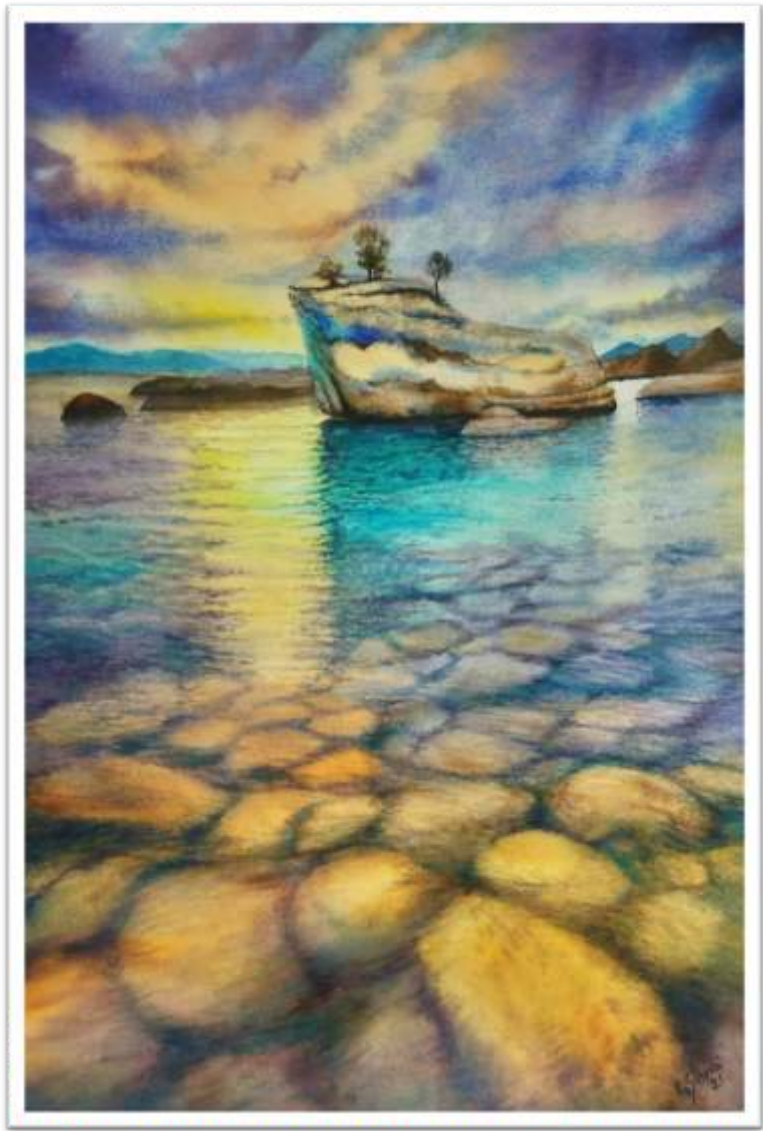
Sunshine
36cm X 56cm
Watercolors
Rs. 54880/-



Undulated
35cm X 55cm
Watercolors
Rs. 47040/-



Under Bridge
59cm X 44cm
Watercolors
Rs. 70560/-



Shallow Water
36cm X 56cm
Watercolors
Rs. 54880/-

Art Commissioning Services



Sublime Galleria also offers high quality curation and commissioning services to its retail, residential, commercial and hospitality clientele. We provide end-to-end art solutions that include curation, concept and proposal generation, project budgeting and forecasting, artist recruitment, production, framing, logistics, warehousing, art installation and content creation to provide clients with the highest standard of art services. Our large global network of artists carefully selected over 10 years of expertise in the art industry enables us to provide highly customisable solutions for a diverse range of project requirements.

Our most recent project, the Sheraton Grand Hotel and Convention Center, opened in Whitefield in April 2018. The 360 room hotel features 9 public areas and Sublime Galleria commissioned and installed 575 works of art from a number of artists over a two year period

For more information, visit www.sublimegalleria.com or call us at 74110 99183

Sublime House Of Tea

Sublime House of Tea has turned tea-drinking into a coveted experience for its steadily growing clientele by presenting perennial favourites like Darjeeling tea, Assam tea and Earl Grey tea that cater to traditionalists, as well as delightful flavours like Jasmine Mandarin, Oolong White Grapes and Rooibos Vanilla Spice that have garnered the loyalty of experimentalists. The brand has established itself as one of the leading curators of distinctive tea variants and creative infusions in India, and has also found its way to cups and hearts beyond. Sublime House of Tea is a part of the Prestige Group, a name that is synonymous with luxury and has been instrumental in redefining the concept of lifestyle in India.



Spurred by her desire to showcase the finest in lifestyle, visionary Ms. Uzma Irfan, Executive Director at the Prestige Group, and Founder of Sublime, UB City, Bangalore, masterminded Sublime House of Tea in 2013. Uzma has a degree in Business Administration from the American Intercontinental University, London, and has been at the forefront of several Prestige Group enterprises that have earned global acclaim and respect. Her keenness in promoting traditionally sound yet innovative ideas is apparent from the Sublime House of Tea. "The idea was to bring different kinds of world tea to an Indian consumer's tea cup", says Uzma. "Most Indian kitchens are now open to experimenting beyond the traditional masala chai! Our teas are curated from the finest produce in the country & crafted into unique blends that are both flavourful & healthy."

For more information, visit www.sublimehouseoftea.com or email: marketing@sublimehouseoftea.com

Sublime
INSPIRING AWE

GALLERIA
8TH FLOOR
UB CITY

Vittal Mallya Road, Bangalore - 560 001
Email: sublime@prestigeconstructions.com
www.sublimegalleria.com