



Sublime
INSPIRING AWE

GALLERIA

8TH FLOOR
UB CITY

Invites you

Thousand Shades Of Passion

by Badrunissa Irfan

13th January TO
13th February, 2023

Scan to know more



Proceeds from this show will be Donated to charity

Sublime

INSPIRING AWE

GALLERIA

8TH FLOOR

UB CITY



Bangalore's Gallery in the sky

Sublime Galleria is a professionally managed, dynamic meeting ground for upcoming artist, art connoisseurs and collectors. Our artists represent a cross section of styles, medium, techniques and forms, which together define the artistic sensibilities that are evolving today. Sublime is on a mission to further the cause of the arts and also sees itself as a dynamic crucible for the next generation to develop and showcase their talent. Sublime reaches out to upcoming artists and offers them a great platform to showcase their talents and make their body of work accessible to Bangalore art community.

We also organize regular workshops for children in various creative and artistic field which include Visual Arts, Theatre, Music, Dance and more. Our recent initiative Sublime Art Ed empower schools and teachers to inspire creativity in children. Sublime Art Ed wants to see an India where every child's creativity is nurtured through the arts.

Sublime also conducts Art Bengaluru, the city's largest art festival featuring a diverse and international selection of art and artists. The latest edition featured over 20 artists and consulates from all over India. Please see the last page for more information.

About the Artist – Badrunissa Irfan



Badrunissa Irfan is no stranger to Sublime and this is her second showing at the galleria after her successful debut a few months ago. The selection of paintings on display this time round impresses one once again with its unvarnished honesty and direct appeal.

The Socratic truism that the more one knows, the more one knows how little one knows, is evident in all of Badrunissa's works. This probably stems from her being an avid reader, whose bibliographic horizon is as broad as it is deep. But, then again, her art is less about knowledge and more about faith. The bedrock as well as the energy that animates her paintings is her abiding faith in the Almighty. She regards herself as an amanuensis of God, merely an instrument, a brush if you will, which is controlled by His will. Allah is the creator, she says, and that she is merely giving expression to what he has created.

This deep faith imbues her work with a profound spirituality. Even as the scenes she depicts may seem quotidian, *prima facie*, deeper inspection reveals layers of meaning that are rich and profound.

Her choice of colours, for example, are bright and effervescent. Never muted or subdued. Her strokes are bold and sure. They speak of a positivity and a certainty of happiness, a confidence in one's Maker.

Her choice of subject is equally revealing, drawing as it does from the Quran, in which Allah says, "If you want to see me and feel my existence then look at nature. Look at the things I have created." Centred on the kaleidoscopic images of nature, her paintings are suffused with vitality and throb with life and energy. They make no pretence of esotericism or stylistic innovation or intellectual complexity. They make no attempt to offer existential commentary, as some critics may expect them to. Yet, her paintings are neither weak nor plain or lacking in individuality. On the contrary, they tell of an imagination that transcends the realm of storytelling and occupies

a niche of its own, which speaks without artifice directly to the soul. They choose to celebrate Nature and life as manifestations of the divine and glorify their immeasurable greatness. They exude a raw power that communicates to the viewer with a directness that stirs him to an instinctive and involuntary response, as all great art does.

Badrunissa says she usually sits in her garden and paints. Immersing herself thus in the beauty of creation inspires her brush with renewed vigour. She is also an animal lover with the horse being a particular favourite, which will explain the equine themes that run through many of her paintings. Her creative horizon is quite colossal by following the path of the Romanticists and exploring heroic themes that touch upon the glory of war as reflected in the manly soldier and the raw virility of the ocean as manifest in the dashing buccaneer.

Another debt she acknowledges is to her mother, from whom she says she inherited her artistic talent and her perfectionist attitude. The latter is manifestly evident in the remarkably minute attention to detail that distinguishes her work, though she is the first to admit that nothing on her canvas can compare to the real glory of God's work.

Badrunissa's art is thus an expression of humility and a recognition of the immanence of the divine to which all creation is subservient and indebted.



WISTERIA CASTLE

24"x36"

Acrylic on Canvas

Rs. 117600/-

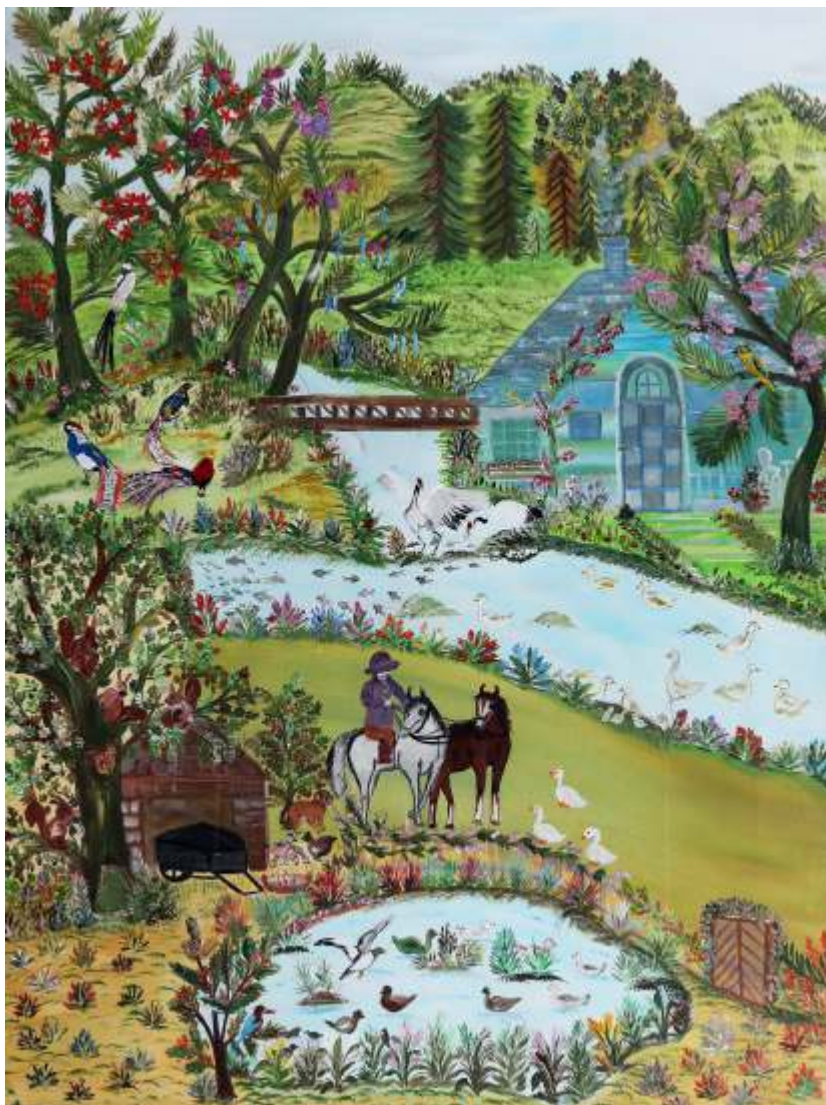


HARMONY

24"x18"

Acrylic on Canvas

Rs. 114464/-



RIDE THROUGH PARADISE

48"x36"

Acrylic on Canvas

Rs. 222656/-



HOMESTEAD
24"x30"
Acrylic on Canvas
Rs. 117600/-



SONDER

36"x24"

Acrylic on Canvas

Rs. 125440/-



SONG BIRDS

24"x18"

Acrylic on Canvas

Rs. 94080/-



ENCHANTED GARDEN

30"x24"

Acrylic on Canvas

Rs. 116816/-



QUERENCIA
36"x24"
Acrylic on Canvas
Rs. 122304/-



SOLILOQUY
30"x24"
Acrylic on Canvas
Rs. 119168/-



MOTHERLY LOVE

24"x36"

Acrylic on Canvas

Rs. 120736/-



ALIVE AT NIGHT

36"x24"

Acrylic on Canvas

Rs. 123872/-



LA REVERIE
24"x36"
Acrylic on Canvas
Rs. 125440/-



RIDE THROUGH PARADISE

48"x48"

Acrylic on Canvas

Rs. 250880/-



IDYLLIC HARMONY

36"x48"

Acrylic on Canvas

Rs. 224224/-



JOURNEY BACK HOME

24"x36.5"

Acrylic on Canvas

Rs. 119168/-



EVANESCENCE

24"x36"

Acrylic on Canvas

Rs. 117600/-



MERA KI

24"x36"

Acrylic on Canvas

Rs. 117600/-



ON THE PROWL

36"x48"

Acrylic on Canvas

Rs. 203840/-



WATERING HOLES

24"x36"

Acrylic on Canvas

Rs. 119168/-



TOGETHERNESS

36"x24"

Acrylic on Canvas

Rs. 119168/-



SWAN SONG
36"x36"
Acrylic on Canvas
Rs. 113680/-



IN THE VALLEY OF EDEN

24"x30"

Acrylic on Canvas

Rs. 118384/-



THE GARDEN OF DELIGHTS

36"x48"

Acrylic on Canvas

Rs. 250880/-



EDEN GARDEN
36"x36"
Acrylic on Canvas
Rs. 125440/-

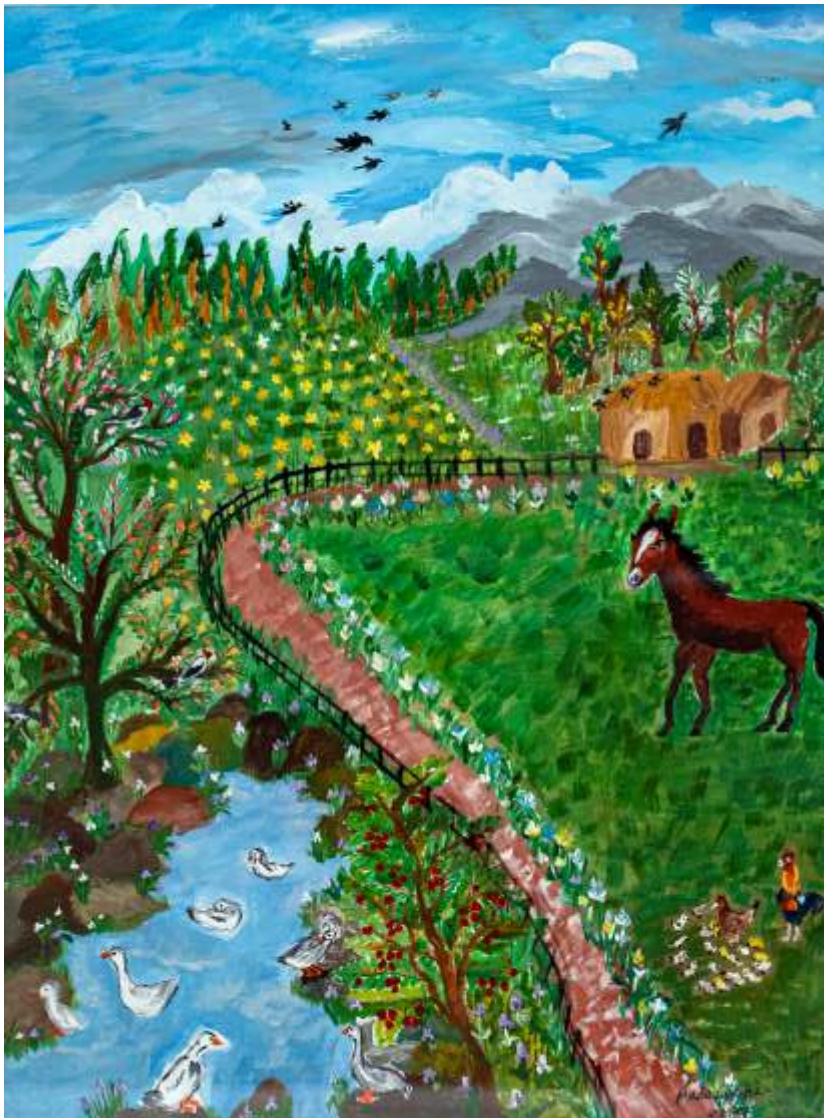


TUNNEL OF LOVE

24"x36"

Acrylic on Canvas

Rs. 119168/-



LIBERTY OF IDENTITY

24"x36"

Acrylic on Canvas

Rs. 117600/-



SNOW BLANKET

24"x36"

Acrylic on Canvas

Rs. 117600/-



ETERNAL FREEDOM

24"x36"

Acrylic on Canvas

Rs. 117600/-



ONISM

24"x36"

Acrylic on Canvas

Rs. 117600/-



QUINTESSENCE

36"x24"

Acrylic on Canvas

Rs. 125440 /-



ETERNAL TRANSFORMATION

18"x16"

Acrylic on Canvas

Rs. 47040/-



TROUVAILLE
24"x18"
Acrylic on Canvas
Rs. 117600/-



ELYSIAN

24"x18"

Acrylic on Canvas

Rs. 117600/-



QUINTESSENCE

18"x24"

Acrylic on Canvas

Rs. 70560/-



ATARAXIA

24"x18"

Acrylic on Canvas

Rs. 117600/-



SERENDIPITY

24"x18"

Acrylic on Canvas

Rs. 117600/-



MORII

21"x16.5"

Acrylic on Canvas

Rs. 109760/-



DE'RIVE

24.5"x20.5"

Acrylic on Canvas

Rs. 117600/-



CHIMERICAL

12.5"x8.5"

Acrylic on Canvas

Rs. 23520/-



NATURE'S HARMON

12.5"x16.5"

Acrylic on Canvas

Rs. 31360/-



CARTE BLANCHE

20.5"x24.5"

Acrylic on Canvas

Rs. 117600/-



BRIDGE TO BLISS

20.5"x24.5"

Acrylic on Canvas

Rs. 117600/-



SEREIN

24"x30"

Acrylic on Canvas

Rs. 117600/-



RAY OF HOPE
48"x48"
Acrylic on Canvas
Rs. 156800/-



HEAVENLY GARDEN

24"x26"

Acrylic on Canvas

Rs. 125440/-



FARM HOUSE
18"x24"
Acrylic on Canvas
Rs. 117600/-

Art Commissioning Services



Sublime Galleria also offers high quality curation and commissioning services to its retail, residential, commercial and hospitality clientele. We provide end-to-end art solutions that include curation, concept and proposal generation, project budgeting and forecasting, artist recruitment, production, framing, logistics, warehousing, art installation and content creation to provide clients with the highest standard of art services. Our large global network of artists carefully selected over 10 years of expertise in the art industry enables us to provide highly customisable solutions for a diverse range of project requirements.

Our most recent project, the Sheraton Grand Hotel and Convention Center, opened in Whitefield in April 2018. The 360 room hotel features 9 public areas and Sublime Galleria commissioned and installed 575 works of art from a number of artists over a two year period

For more information,
visit www.sublimegalleria.com or call us at 81975 54006, 99901 50964

Sublime House Of Tea

Sublime House of Tea has turned tea-drinking into a coveted experience for its steadily growing clientele by presenting perennial favourites like Darjeeling tea, Assam tea and Earl Grey tea that cater to traditionalists, as well as delightful flavours like Jasmine Mandarin, Oolong White Grapes and Rooibos Vanilla Spice that have garnered the loyalty of experimentalists. The brand has established itself as one of the leading curators of distinctive tea variants and creative infusions in India, and has also found its way to cups and hearts beyond. Sublime House of Tea is a part of the Prestige Group, a name that is synonymous with luxury and has been instrumental in redefining the concept of lifestyle in India.



Why Sublime?

Spurred by her desire to showcase the finest in lifestyle, visionary Ms. Uzma Irfan, Executive Director at the Prestige Group, and Founder of Sublime, UB City, Bangalore, masterminded Sublime House of Tea in 2013. Uzma has a degree in Business Administration from the American Intercontinental University, London, and has been at the forefront of several Prestige Group enterprises that have earned global acclaim and respect. Her keenness in promoting traditionally sound yet innovative ideas is apparent from the Sublime House of Tea. "The idea was to bring different kinds of world tea to an Indian consumer's tea cup", says Uzma. "Most Indian kitchens are now open to experimenting beyond the traditional masala chai! Our teas are curated from the finest produce in the country & crafted into unique blends that are both flavourful & healthy."

For more information, visit www.sublimehouseoftea.com or email: marketing@sublimehouseoftea.com



GALLERIA

8TH FLOOR

UB CITY

Vittal Mallya Road, Bangalore - 560 001

Email: sublime@prestigeconstructions.com

www.sublimegalleria.com