



Sublime

INSPIRING AWE

GALLERIA
8TH FLOOR
UB CITY

Invites you

Evolution of Modern Forms by Atreyee Bhattacharjee

Opening Day

Friday 3rd March 2023

Time: 5:30 PM

Scan to know more



Sublime

INSPIRING AWE

GALLERIA

8TH FLOOR

UB CITY



Bangalore's Gallery in the sky

Sublime Galleria is a professionally managed, dynamic meeting ground for upcoming artist, art connoisseurs and collectors. Our artists represent a cross section of styles, medium, techniques and forms, which together define the artistic sensibilities that are evolving today. Sublime is on a mission to further the cause of the arts and also sees itself as a dynamic crucible for the next generation to develop and showcase their talent. Sublime reaches out to upcoming artists and offers them a great platform to showcase their talents and make their body of work accessible to Bangalore art community.

We also organize regular workshops for children in various creative and artistic field which include Visual Arts, Theatre, Music, Dance and more. Our recent initiative Sublime Art Ed empower schools and teachers to inspire creativity in children. Sublime Art Ed wants to see an India where every child's creativity is nurtured through the arts.

Sublime also conducts Art Bengaluru, the city's largest art festival featuring a diverse and international selection of art and artists. The latest edition featured over 20 artists and consulates from all over India. Please see the last page for more information.

About the Artist – Atreyee Bhattacharjee



An artist, Curator, Restorer, Editor, Creative writer and now a Research candidate, I have been wearing many hats in my professional career that spans more than 7 years. The journey also included commercial works with firms like Siemens & Bharat Petroleum as well as involvement in multiple state & national level workshops & bagging few prestigious awards.

My creations are highly motivated by the amalgamation of Classical & Mythological Art Forms ; as well as the consistent evolution of Modern Forms and Robotic gesture. I am open and flexible in choosing conceptual parts in my work and many times It has been inspired by ancient Indian Philosophy, Scripts & Myths, and social aspects, incidents,

social incidents and human psychology. The major experiments on chronological developments of classical forms of human compositions and design elements to till the evolution of next futuristic forms are the main points of experiment in my works. The emotions and expressions are applied as catalysts to take the composition in action. I am fascinated by the complex nature of love , at once a source of pleasure and pain . There is the ecstasy felt by the chosen beloved or ardent admirer . Love's fleeting nature however , also highlights the despairs of the forsaken , unnoticed and forgotten lovers , often symbolized by physically visible wounds . The surreal aspect of an isolated lover ' s eye attracts me tremendously — the idea of physical dismemberment which is symbolic of a removal or estrangement of a loved one , not unlike the reliquaries of saints in old devotional images . It reminds me of the Mexican ' Milagros ' — little charms of different body parts used to aid in praying for the healing of broken arms or hearts , or even eyes . Compositionally speaking , the framed ornamental eye gives context and a reason for a floating third or fourth eye in a painting. It is a device of conceit : a portrait within a portrait . Following the way of my thought, I have turned towards the Ancient Indian Style , and also the Mythology of Ancient India . I was inspired from the Indian Temple Sculptures and also from its stories . The Innocence and Impulse of the Indian Classical Sculptures touched my heart and inspired me to anoint these classical styles and expressions of this Art , and by this influence I have created all of these sculptures on the present time and stage of Modern Contemporary Art. I also trying to modify it's form from classical to contemporary with all my creations in contemporary. My works are also connects Human, their vivid philosophy and life struggles in different time and the relation of man and soil.

Atreyee Bhattacharjee

Artist

B.F.A(Hons.) I.M.F.A (Gold Medalist)



Auction Of Beauty - History Of Pillar Series

2.5ft x 2ft x 1ft

Iron & Steel

Rs. 313600/-

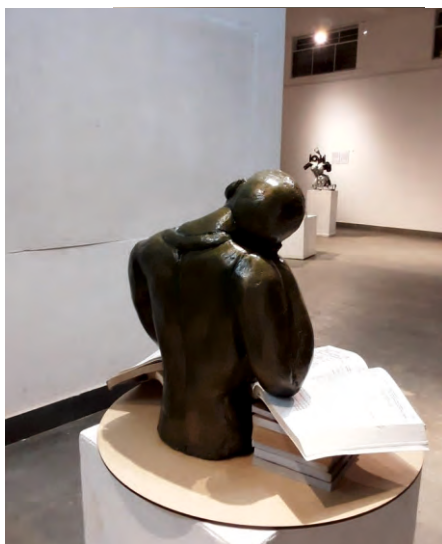


Peasant Exploitation

3.3ft x10"

Iron & Steel

Rs. 101920/-



Insouciance in Render Education

1.5 x 1 ft x 1ft

Fider & Mixed media Installation

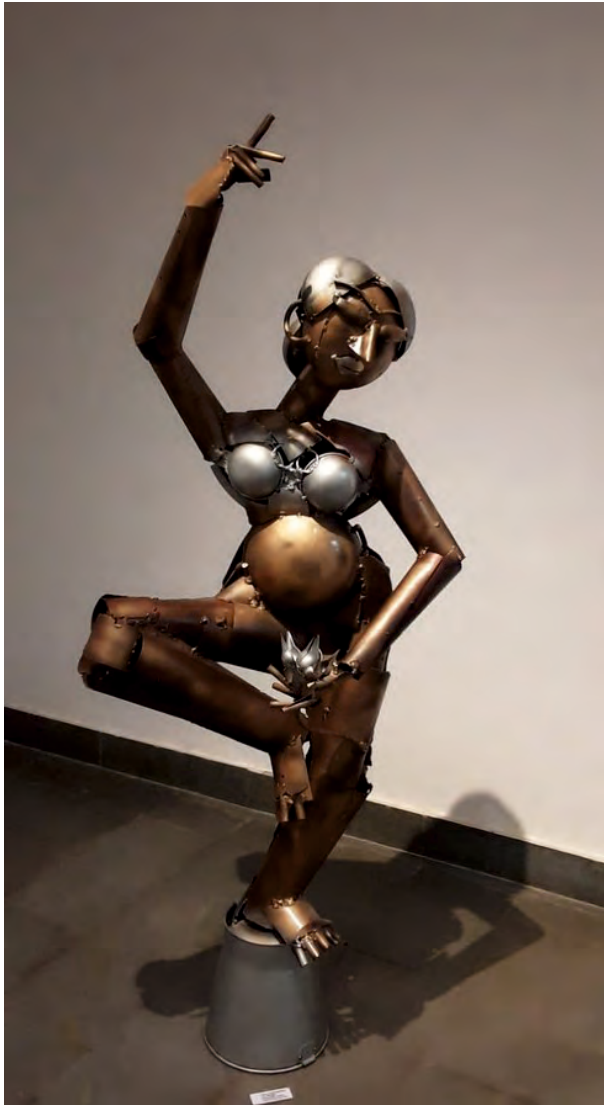
Rs. 47040/-



Neighbours
2.4 ft x 8" x 6"
Cement & Iron
Rs. 31360/-



Neighbours
1.2 ft x 2ft x 2ft
Mixed Media & Terracotta
Rs. 31360/-

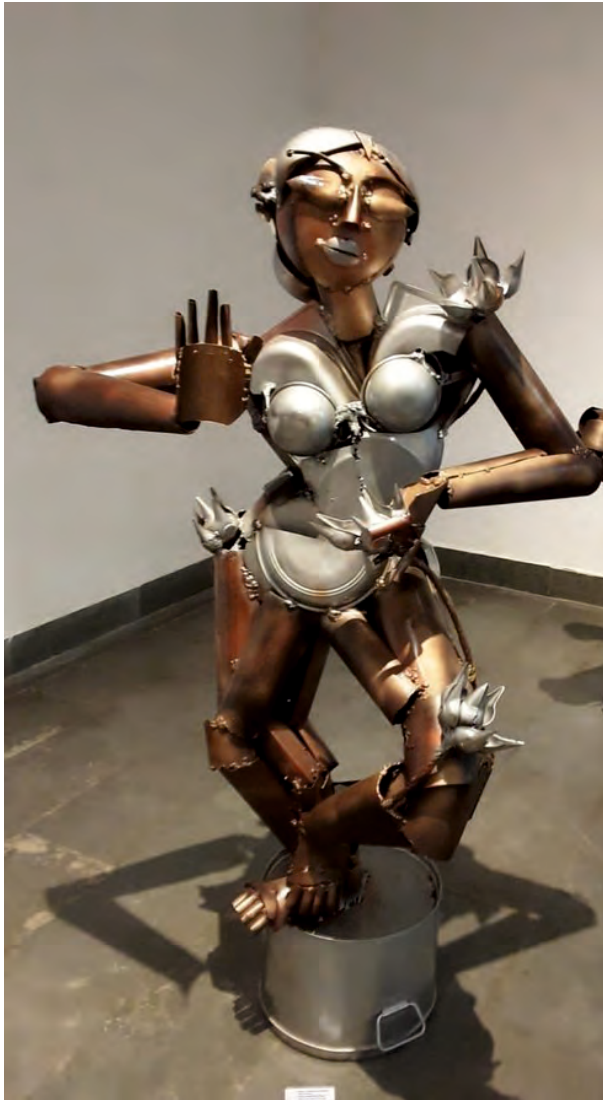


Brahmnai

5ft 8"x 2ft 8"

Steel & iron I Welding & Assembling

Rs. 156800/-



Apala

4ft 7" x 33"

Steel & iron I Welding & Assembling

Rs. 156800/-



Maruti

6ft 4" x 2ft 8"

Steel & iron I Welding & Assembling

Rs. 156800/-



Dhara

4ft 6" x 27"

Steel & iron I Welding & Assembling

Rs. 156800/-



Tajaa

3ft 7" x 5ft 4"

Steel & iron I Welding & Assembling

Rs. 156800/-



Untitled-1
1.3ft x 10"
Stone
Rs. 18816/-



Untitled-2
1.3ft x 10"
Stone
Rs. 18816/-



Untitled-3
1.3ft x 10"
Stone
Rs. 18816/-



Civilization
2.8ft x 1ft x 1ft
Iron & Steel
Rs. 94080/-



Togetherhness

1ft x 1ft

Terracotta

Rs. 15680/-

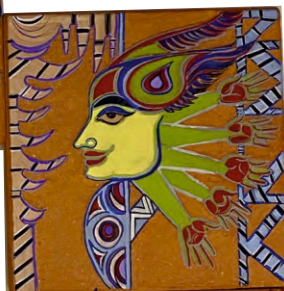


Through The Window

1ft x 7" x 7"

Siporex BloxckCarving

Rs. 10976/-

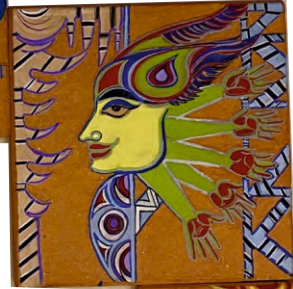


Civilization - Pursuit of Abode -Art

10" x 10"

Terracotta Tiles

Rs. 23520/-



Mountain of Ribs-Art
10" x10"
Terracotta Tiles
Rs. 23520/-



Black Swan

3ft x 6" x 6"

Wood

Rs. 31360/-



History of Pillar

4.5 ft x 1ft x 1ft

Iron & Steel

Rs. 78400/-

Art Commissioning Services



Sublime Galleria also offers high quality curation and commissioning services to its retail, residential, commercial and hospitality clientele. We provide end-to-end art solutions that include curation, concept and proposal generation, project budgeting and forecasting, artist recruitment, production, framing, logistics, warehousing, art installation and content creation to provide clients with the highest standard of art services. Our large global network of artists carefully selected over 10 years of expertise in the art industry enables us to provide highly customisable solutions for a diverse range of project requirements.

Our most recent project, the Sheraton Grand Hotel and Convention Center, opened in Whitefield in April 2018. The 360 room hotel features 9 public areas and Sublime Galleria commissioned and installed 575 works of art from a number of artists over a two year period

For more information,
visit www.sublimegalleria.com or call us at 81975 54006, 99901 50964

Sublime House Of Tea

Sublime House of Tea has turned tea-drinking into a coveted experience for its steadily growing clientele by presenting perennial favourites like Darjeeling tea, Assam tea and Earl Grey tea that cater to traditionalists, as well as delightful flavours like Jasmine Mandarin, Oolong White Grapes and Rooibos Vanilla Spice that have garnered the loyalty of experimentalists. The brand has established itself as one of the leading curators of distinctive tea variants and creative infusions in India, and has also found its way to cups and hearts beyond. Sublime House of Tea is a part of the Prestige Group, a name that is synonymous with luxury and has been instrumental in redefining the concept of lifestyle in India.



Why Sublime?

Spurred by her desire to showcase the finest in lifestyle, visionary Ms. Uzma Irfan, Executive Director at the Prestige Group, and Founder of Sublime, UB City, Bangalore, masterminded Sublime House of Tea in 2013. Uzma has a degree in Business Administration from the American Intercontinental University, London, and has been at the forefront of several Prestige Group enterprises that have earned global acclaim and respect. Her keenness in promoting traditionally sound yet innovative ideas is apparent from the Sublime House of Tea. “The idea was to bring different kinds of world tea to an Indian consumer's tea cup”, says Uzma. “Most Indian kitchens are now open to experimenting beyond the traditional masala chai! Our teas are curated from the finest produce in the country & crafted into unique blends that are both flavourful & healthy.”

For more information, visit www.sublimehouseoftea.com or email: marketing@sublimehouseoftea.com



GALLERIA

8TH FLOOR

UB CITY

Vittal Mallya Road, Bangalore - 560 001

Email: sublime@prestigeconstructions.com

www.sublimegalleria.com