



Sublime
INSPIRING AWE

GALLERIA

Invites you

Ethereal Charm

by Niladri Gosh



Opens on Friday **13th June, 2025**

Closes on **6th July, 2025**



Sublime Galleria
8th Floor UB City, Bangalore

Scan to know more



+91 81473 76032



www.sublimegalleria.com



Sublime

INSPIRING AWE

GALLERIA

8TH FLOOR
UB CITY



Bangalore's Gallery in the sky

Sublime Galleria is a professionally managed, dynamic meeting ground for upcoming artist, art connoisseurs and collectors. Our artists represent a cross section of styles, medium, techniques and forms, which together define the artistic sensibilities that are evolving today. Sublime is on a mission to further the cause of the arts and also sees itself as a dynamic crucible for the next generation to develop and showcase their talent. Sublime reaches out to upcoming artists and offers them a great platform to showcase their talents and make their body of work accessible to Bangalore art community.

We also organize regular workshops for children in various creative and artistic field which include Visual Arts, Theatre, Music, Dance and more. Our recent initiative Sublime Art Ed empower schools and teachers to inspire creativity in children. Sublime Art Ed wants to see an India where every child's creativity is nurtured through the arts.

Sublime also conducts Art Bengaluru, the city's largest art festival featuring a diverse and international selection of art and artists. The latest edition featured over 20 artists and consulates from all over India. Please see the last page for more information.

About the Artist – Niladri Gosh



Hi, I'm Niladri Ghosh, West Bengal, India. Painting is my passion.

My project focuses on forests and wildlife. Forests are important habitats for many animals and plants. Wildlife includes all the animals that live in these habitats. It is crucial to protect forests and wildlife for the well-being of our planet and all living creatures.

Creating artwork that showcases the beauty of forests and wildlife is something I take pleasure in. Through my paintings, I strive to emphasize the significance of preserving our natural surroundings. Global warming poses a serious threat to our planet, and deforestation is equally alarming. It is crucial to shield our forests from threats like digital encroachment and network towers that disrupt their ecosystems.

By using my art to highlight the importance of protecting nature, I hope to raise awareness about these pressing issues. The Earth's climate is changing rapidly, and we need to take action to safeguard our environment. Deforestation not only harms wildlife habitats but also contributes to the loss of biodiversity. Preventing the intrusion of digital technologies into our forests is essential to maintain the delicate balance of their ecosystems.

As an artist passionate about nature conservation, I aim to inspire others to appreciate and protect our environment. We must work together to combat global warming and halt the harmful effects of deforestation. Preserving forests from the dangers of digitalization and invasive network towers is essential for the well-being of our planet. Through art and advocacy, we can make a difference in safeguarding the natural world for future generations.

In my paintings, I often portray peacocks as well as other animals to represent the plight of homeless and hungry individuals amidst deforestation. By using these animals as symbols, I aim to convey the message of the urgent need to address environmental destruction and its impact on vulnerable populations. The vibrant colors and graceful forms of peacocks juxtaposed with the stark reality of hunger and homelessness create a powerful visual narrative in my artwork, prompting viewers to reflect on the interconnectedness of nature and human society.

Through my art, I strive to raise awareness about the consequences of deforestation on both wildlife and people. The presence of peacocks and other animals in my paintings serves as a reminder of the beauty and diversity that is at risk due to environmental degradation. By incorporating these symbolic elements, I hope to inspire viewers to consider the importance of preserving our natural world and taking action to protect it for future generations. My paintings seek to provoke thought and evoke empathy for the challenges faced by those affected by deforestation and habitat loss.

The vibrant green color of peacocks holds great significance as it symbolizes the lush forest in dry and barren lands. This unique coloration showcases the resilience and beauty of peacocks in the face of challenging environments. It is no wonder that the peacock has been chosen as the national bird of India, representing the nation's rich and diverse natural heritage. The green hues of peacocks evoke a sense of nature's serenity and the importance of protecting our forests for future generations to enjoy. Their green color serves as a reminder of the harmony and balance that must be maintained between humans and the environment.

I'll be very grateful to you if I get any better opportunity. This will give me confidence and a platform to grow in the field of painting. Painting paves the way for me to look beyond and discover the layers of life in all its shades... the more I worked the more I learned, this learning will go on making my life a bit more meaningful.



Title: Finding Nectarine

Size: 37 x 29 inch(With Frame)

Medium: Watercolor on paper

Artist Price: Rs. 39,200/-



Title: Untitled 1

Size: 37 x 29 inch(With Frame)

Medium: Watercolor on paper

Artist Price: Rs. 39,200/-



Title: Morning Light

Size: 37 x 29 inch(With Frame)

Medium: Watercolor on paper

Artist Price: Rs. 54,880/-



Title: Untitled 2

Size: 37 x 29 inch(With Frame)

Medium: Watercolor on paper

Artist Price: Rs. 54,880/-



Title: Dooars-1

Size: 22 x 29 inch(With Frame)

Medium: Watercolor on paper

Artist Price: Rs. 28,224/-



Title: Dooars-2

Size: 22 x 29 inch(With Frame)

Medium: Watercolor on paper

Artist Price: Rs. 28,224/-



Title: Dooars-3

Size: 22 x 29 inch(With Frame)

Medium: Watercolor on paper

Artist Price: Rs. 28,224/-



Title: Dooars-4

Size: 22 x 29 inch(With Frame)

Medium: Watercolor on paper

Artist Price: Rs. 43,904/-



Title: Dooars-5

Size: 22 x 29 inch(With Frame)

Medium: Watercolor on paper

Artist Price: Rs. 62,720/-



Title: Dooars-6

Size: 22 x 29 inch(With Frame)

Medium: Watercolor on paper

Artist Price: Rs. 62,720/-



Title: Untitled 3

Size: 22 x 29 inch(With Frame)

Medium: Watercolor on paper

Artist Price: Rs. 62,720/-



Title: Dooars 7

Size: 22 x 29 inch(With Frame)

Medium: Watercolor on paper

Artist Price: Rs. 23,520/-



Title: Dooars-8

Size: 22 x 27 inch(With Frame)

Medium: Watercolor on paper

Artist Price: Rs. 28,224/-



Title: Dooars-9

Size: 22 x 27 inch(With Frame)

Medium: Watercolor on paper

Artist Price: Rs. 39,200/-



Title: Forest

Size: 38 x 26 inch(With Frame)

Medium: Acrylic On Canvas

Artist Price: Rs. 1,01,920/-



Title: Rainy day

Size: 22 x 26 inch(With Frame)

Medium: Acrylic On Canvas

Artist Price: Rs. 54,880/-

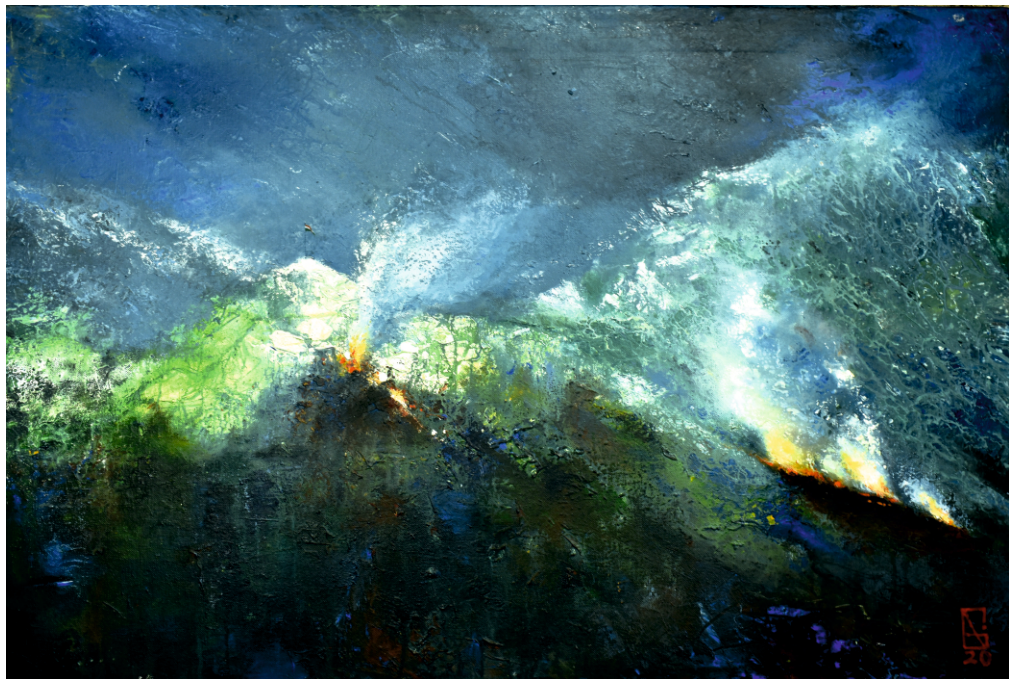


Title: Urban Life

Size: 32 x 26 inch(With Frame)

Medium: Acrylic On Canvas

Artist Price: Rs. 54,880/-

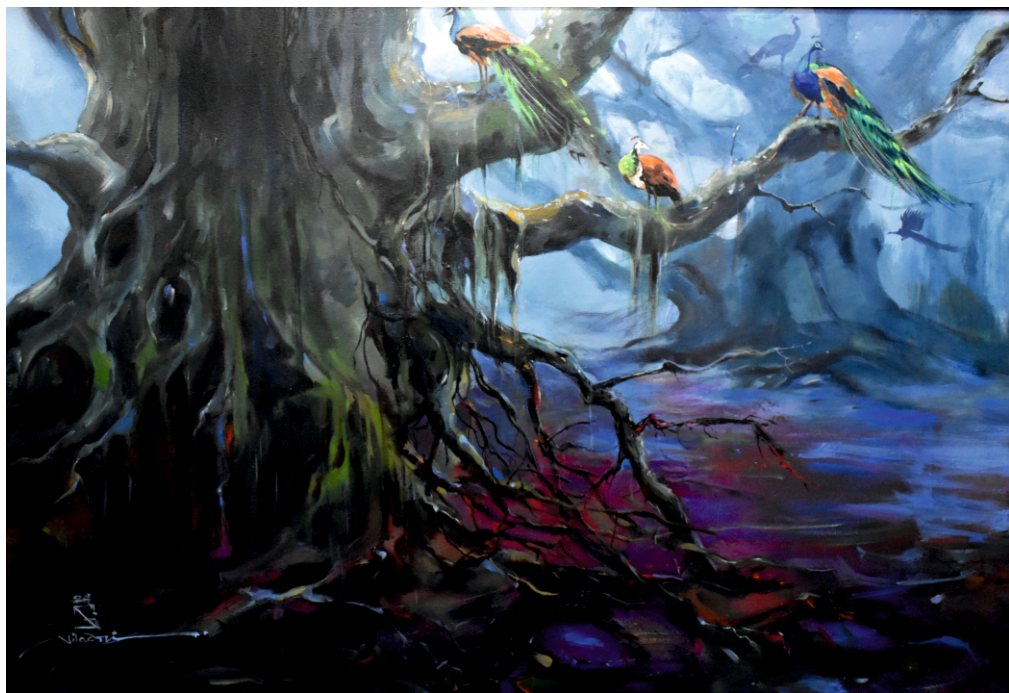


Title: After War

Size: 38 x 26 inch(With Frame)

Medium: Acrylic On Canvas

Artist Price: Rs. 70,560/-



Title: Dark Forest

Size: 38 x 26 inch(With Frame)

Medium: Acrylic On Canvas

Artist Price: Rs. 1,01,920/-



Title: City Life 2

Size: 38 x 26 inch(With Frame)

Medium: Acrylic On Canvas

Artist Price: Rs. 1,01,920/-



Title: Family -1

Size: 16 x 20 inch(With Frame)

Medium: Acrylic On Canvas

Artist Price: Rs. 1,09,760/- (full set)



Title: Family -2

Size: 16 x 20 inch(With Frame)

Medium: Acrylic On Canvas

Artist Price: Rs. 1,09,760/- (full set)



Title: Family -3

Size: 38 x 26 inch(With Frame)

Medium: Acrylic On Canvas(Mixed Media)

Artist Price: Rs. 1,09,760/- (full set)



Title: Family -4

Size: 16 x 20 inch(With Frame)

Medium: Acrylic On Canvas

Artist Price: Rs. 1,01,760/- (full set)



Title: Family -5

Size: 16 x 20 inch(With Frame)

Medium: Acrylic On Canvas

Artist Price: Rs. 1,01,760/- (full set)

Art Commissioning Services



Sublime Galleria also offers premium curation and commissioning services tailored for retail, residential, commercial, and hospitality clientele. With over a decade of expertise in the art industry, we have built a vast global network of talented artists, carefully selected to deliver bespoke and highly customizable solutions. Whether it's a large-scale commercial project or an intimate residential setting, we bring artistic visions to life with precision, creativity, and a deep understanding of our clients' unique requirements.

Our end-to-end art solutions encompass everything from curation, concept development, and proposal generation to project budgeting, artist selection, production, framing, logistics, warehousing, installation, and content creation-ensuring the highest standards of artistic excellence.

Some of our latest works include JW Marriott Bengaluru Prestige Golfshire Resort & Spa, The Sheraton Grand Hotel and Convention Center Whitefield, Mulberry Shades Bengaluru Nandi Hills, A Tribute Portfolio Resort, Moxy Bengaluru Airport Prestige Tech Cloud, The Artiste Kochi, A Tribute Portfolio Hotel etc.

For more information, call us at +91 81975 54006 or drop an enquiry!

Sublime House Of Tea

Sublime House of Tea has turned tea-drinking into a coveted experience for its steadily growing clientele by presenting perennial favourites like Darjeeling tea, Assam tea and Earl Grey tea that cater to traditionalists, as well as delightful flavours like Jasmine Mandarin, Oolong White Grapes and Rooibos Vanilla Spice that have garnered the loyalty of experimentalists. The brand has established itself as one of the leading curators of distinctive tea variants and creative infusions in India, and has also found its way to cups and hearts beyond. Sublime House of Tea is a part of the Prestige Group, a name that is synonymous with luxury and has been instrumental in redefining the concept of lifestyle in India.



Why Sublime?

Spurred by her desire to showcase the finest in lifestyle, visionary Ms. Uzma Irfan, Executive Director at the Prestige Group, and Founder of Sublime, UB City, Bangalore, masterminded Sublime House of Tea in 2013. Uzma has a degree in Business Administration from the American Intercontinental University, London, and has been at the forefront of several Prestige Group enterprises that have earned global acclaim and respect. Her keenness in promoting traditionally sound yet innovative ideas is apparent from the Sublime House of Tea. "The idea was to bring different kinds of world tea to an Indian consumer's tea cup", says Uzma. "Most Indian kitchens are now open to experimenting beyond the traditional masala chai! Our teas are curated from the finest produce in the country & crafted into unique blends that are both flavourful & healthy."

For more information, visit www.sublimehouseoftea.com or email: marketing@sublimehouseoftea.com



GALLERIA
8TH FLOOR
UB CITY

Vittal Mallya Road, Bangalore - 560 001
Email: sublime@prestigeconstructions.com
www.sublimegalleria.com

Let's connect on Instagram!



EXPERIENCE OUR COLLECTION ACROSS:

Sublime
INSPIRING AWE
GALLERIA
PRESTIGE SKY TECH
HYDERABAD

CONRAD
BENGALURU


JW MARRIOTT
BENGALURU PRESTIGE GOLFSHIRE
RESORT & SPA