

**Sublime**  
INSPIRING AWE

GALLERIA  
8TH FLOOR  
UB CITY

Invites you

## *Charcoal in Stillness and Motion*

From Stillness to Motion – A Journey of Expression by Gautam Bansal



Opens on Friday **8<sup>th</sup> August , 2025**  
Closes on **7<sup>th</sup> September, 2025**



Sublime Galleria  
8th Floor UB City, Bangalore



**+91 81473 76032**



[www.sublimegalleria.com](http://www.sublimegalleria.com)

Scan to know more



# Sublime

INSPIRING AWE

## GALLERIA

8TH FLOOR

UB CITY



## Bangalore's Gallery in the sky

Sublime Galleria is a professionally managed, dynamic meeting ground for upcoming artist, art connoisseurs and collectors. Our artists represent a cross section of styles, medium, techniques and forms, which together define the artistic sensibilities that are evolving today. Sublime is on a mission to further the cause of the arts and also sees itself as a dynamic crucible for the next generation to develop and showcase their talent. Sublime reaches out to upcoming artists and offers them a great platform to showcase their talents and make their body of work accessible to Bangalore art community.

We also organize regular workshops for children in various creative and artistic field which include Visual Arts, Theatre, Music, Dance and more. Our recent initiative Sublime Art Ed empower schools and teachers to inspire creativity in children. Sublime Art Ed wants to see an India where every child's creativity is nurtured through the arts.

Sublime also conducts Art Bengaluru, the city's largest art festival featuring a diverse and international selection of art and artists. The latest edition featured over 20 artists and consulates from all over India. Please see the last page for more information.

# About the Artist – Gautam Bansal



## Artist Bio

Gautam Bansal is a Bengaluru-based artist whose creative journey spans over two decades of working with charcoal. With a background in Art & Design and years in the corporate world, he eventually left that path to pursue a full-time life in art—driven by a deeper need for expression, sincerity and connection.

His works—often quiet, yet deeply evocative—have been featured in premier art festivals including the India Art Festival and Mumbai Art Fair, and are part of notable private collections across India. Some of

his pieces have been curated by prominent public figures and showcased at exclusive events.

Gautam's presence in over 30 exhibitions and his continued recognition through awards and features reflect an artist committed to steady growth and expressive depth. As a guest faculty at a school for autism, he conducts weekly charcoal workshops, offering art as a language of connection and self-expression.

## Artist Statement

Charcoal gives me space to strip things down—to explore not just form, but feeling. I'm drawn to the threshold where stillness becomes motion, where something undefined begins to take shape. This is where my work lives.

Whether I'm channelling the force of a galloping horse, the quiet presence of a dancer, or the texture of a human face, I'm always searching for that moment when something shifts—when an image breathes.

Nature moves through my work not only as subject but as metaphor: animals, storms, wind, water and the human spirit, all shaped by unseen currents. I embrace the imperfect, the unfinished, the emotionally vulnerable. Each piece holds space for what's in-between—between clarity and blur, power and poise, exposure and restraint.

In a fast world, I hope my work invites viewers to slow down, feel more and find something of themselves in the quiet pulse of charcoal.



Still in Motion  
Charcoal & Gold Highlights on Linen Canvas  
H.36, W.25 inches  
INR 1,55,232/-





Unrelenting  
Charcoal & Gold Highlights on Linen Canvas  
H.36, W.25 inches  
INR 1,59,936/-



Elephant Whispers  
Charcoal on Heavyweight White Paper  
H.37, W.29 inches  
INR 1,31,712/-





White Tiger in Red  
Mixed media on Heavyweight White Paper  
H.38, W.30 inches  
INR 1,39,552/-



Silent Strength  
Charcoal & Gold Highlights on Paper  
H.31, W.24 inches  
INR 67,424/-





Koi  
Mixed Media on Paper  
H.25, W.30 inches  
INR 70,560/-



Boundless  
Charcoal & Gold Highlights on Paper  
H.25, W.30 inches  
INR 67,424/-



Vitality

Charcoal & Pastels on Paper

H.23, W.28 inches

INR 61,152/-





## Through the Storm

Charcoal & Pastels on Heavyweight White Paper

H.36, W.27 inches

INR 1,12,896/-





Dance with Destiny  
Charcoal & Pastels on Paper  
H.16, W.23 inches  
INR 25,088/-



Amarosa

Mixed Media on Heavyweight White Paper

H.22, W.31 inches

INR 51,744/-



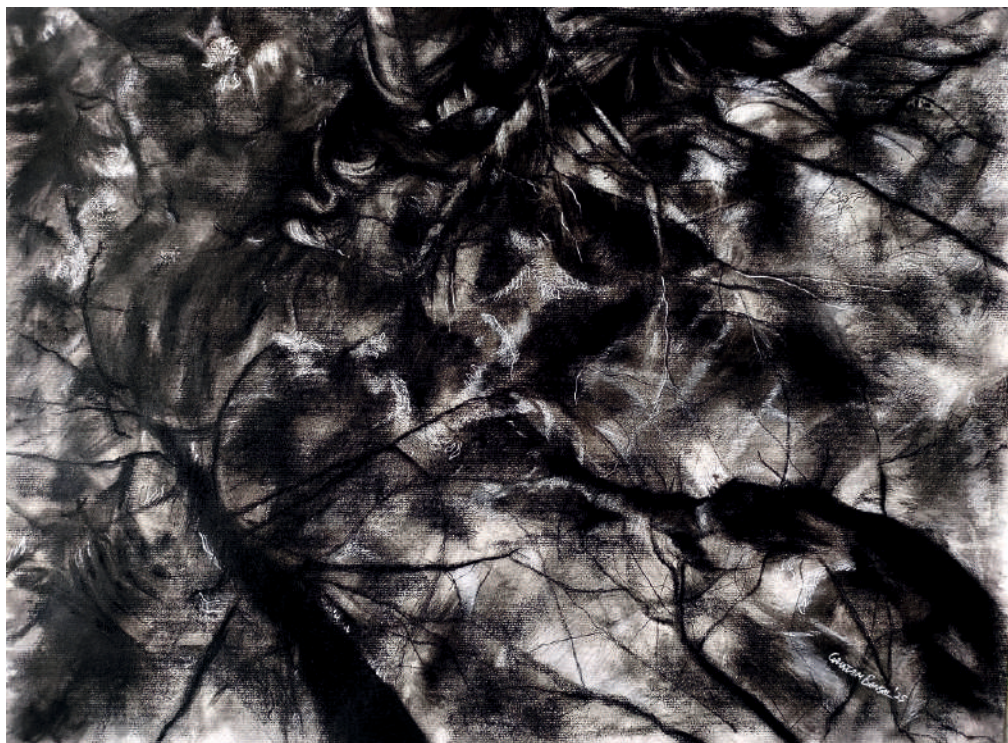
Loyal Gaze  
Charcoal & Pastels on Paper  
H.22, W.18 inches  
INR 21,952/-





Winds of Resolve  
Charcoal on Paper  
H.32, W.25 inches  
INR 68,992/-





Through the Canopy

Charcoal on Paper

H.25, W.31 inches

INR 65,856/-



Unseen Forces  
Charcoal on Paper  
H.31, W.24 inches  
INR 64,288/-



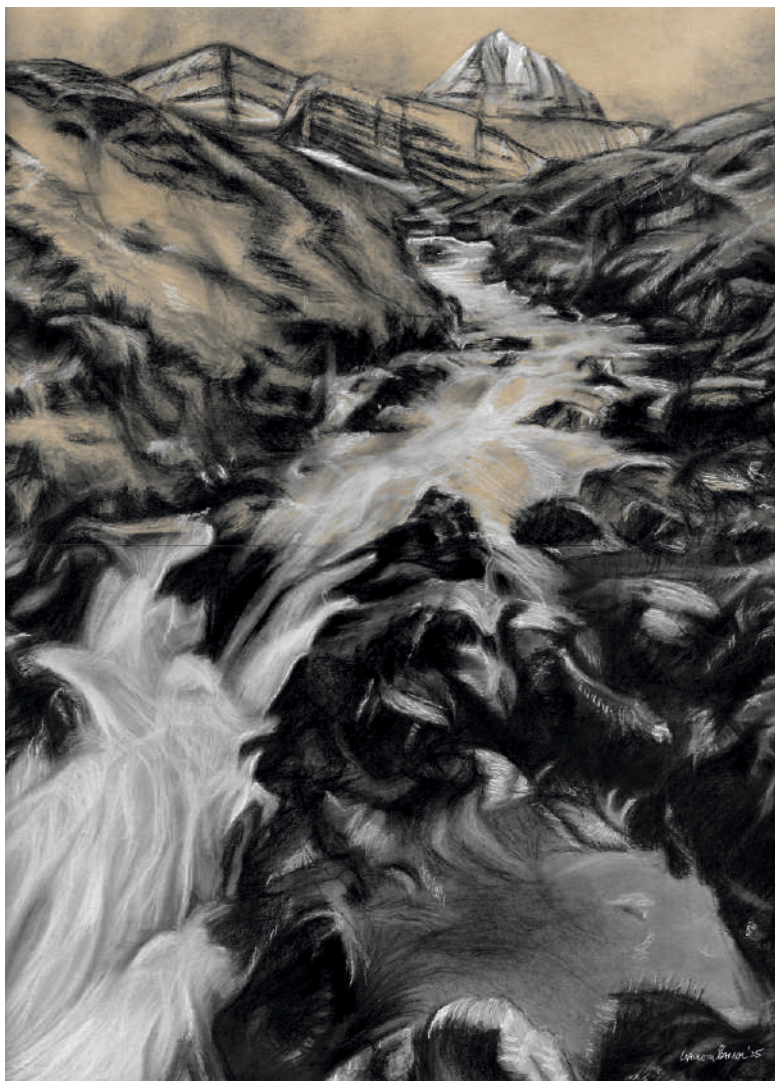


Bloom  
Charcoal on Paper  
H.25, W.31 inches  
INR 70,560/-



Chaos and Calm  
Charcoal on Paper  
H.24, W.29 inches  
INR 68,992/-





Eternal Flow  
Mixed Media on Paper  
H.31, W.24 inches  
INR 64,288/-



Journey  
Charcoal on Paper  
H.18, W.22 inches  
INR 28,224/-



## Jashn (Celebrations)

Charcoal & Pastels on Heavyweight Black Paper

H.40, W.31 inches

INR 1,64,640/-





Grace  
Charcoal on Paper  
H.27, W.22 inches  
INR 51,744/-



Fluid Beauty  
Mixed Media on Heavyweight White Paper  
H.19, W.19 inches  
INR 26,656/-



Ethereal Essence  
Charcoal & Pastels on Paper  
H.27, W.21 inches  
INR 29,792/-





Sisters

Pastels & Charcoal on Heavyweight Black Paper

H.24, W.25 inches

INR 29,792/-



Allure

Charcoal on Paper

H.28, W.22 inches

INR 64,288/-



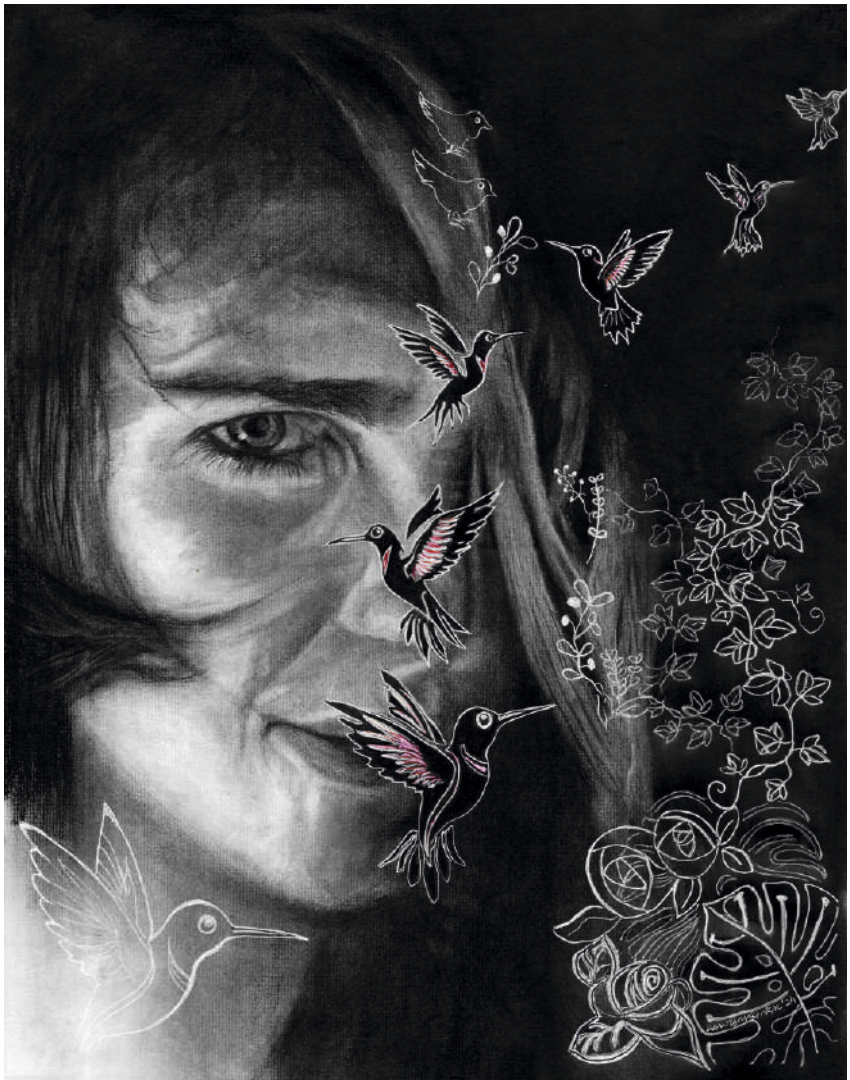
Shubharambh (Auspicious Beginning)

Charcoal on Heavyweight White Paper

H.28, W.28 inches (premium anti-glare glass)

INR 1,12,896/-





Amidst Nature  
Mixed Media on paper  
H.25, W.22 inches  
INR 51,744/-

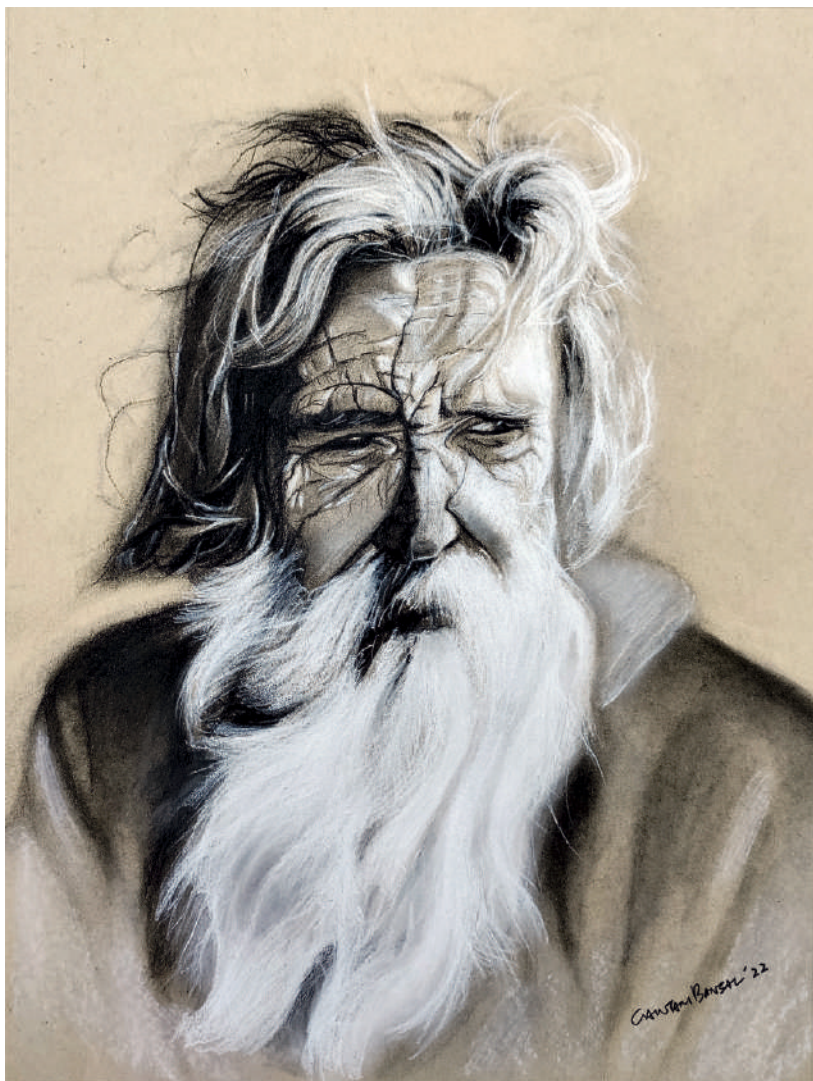


## Duality

Mixed Media on paper

H.24, W.19 inches

INR 28,224/-



Oldie

Charcoal & Pastels on Paper

H.20, W.16 inches

INR 21,952/-





Face of Evolution

Charcoal on Heavyweight White Paper

H.25, W.24 inches

INR 39,200/-

# Art Commissioning Services



Sublime Galleria also offers premium curation and commissioning services tailored for retail, residential, commercial, and hospitality clientele. With over a decade of expertise in the art industry, we have built a vast global network of talented artists, carefully selected to deliver bespoke and highly customizable solutions. Whether it's a large-scale commercial project or an intimate residential setting, we bring artistic visions to life with precision, creativity, and a deep understanding of our clients' unique requirements.

Our end-to-end art solutions encompass everything from curation, concept development, and proposal generation to project budgeting, artist selection, production, framing, logistics, warehousing, installation, and content creation-ensuring the highest standards of artistic excellence.

Some of our latest works include JW Marriott Bengaluru Prestige Golfshire Resort & Spa, The Sheraton Grand Hotel and Convention Center Whitefield, Mulberry Shades Bengaluru Nandi Hills, A Tribute Portfolio Resort, Moxy Bengaluru Airport Prestige Tech Cloud, The Artiste Kochi, A Tribute Portfolio Hotel etc.

For more information, call us at +91 81975 54006 or drop an enquiry!



# Sublime House Of Tea

Sublime House of Tea has turned tea-drinking into a coveted experience for its steadily growing clientele by presenting perennial favourites like Darjeeling tea, Assam tea and Earl Grey tea that cater to traditionalists, as well as delightful flavours like Jasmine Mandarin, Oolong White Grapes and Rooibos Vanilla Spice that have garnered the loyalty of experimentalists. The brand has established itself as one of the leading curators of distinctive tea variants and creative infusions in India, and has also found its way to cups and hearts beyond. Sublime House of Tea is a part of the Prestige Group, a name that is synonymous with luxury and has been instrumental in redefining the concept of lifestyle in India.



## Why Sublime?

Spurred by her desire to showcase the finest in lifestyle, visionary Ms. Uzma Irfan, Executive Director at the Prestige Group, and Founder of Sublime, UB City, Bangalore, masterminded Sublime House of Tea in 2013. Uzma has a degree in Business Administration from the American Intercontinental University, London, and has been at the forefront of several Prestige Group enterprises that have earned global acclaim and respect. Her keenness in promoting traditionally sound yet innovative ideas is apparent from the Sublime House of Tea. "The idea was to bring different kinds of world tea to an Indian consumer's tea cup", says Uzma. "Most Indian kitchens are now open to experimenting beyond the traditional masala chai! Our teas are curated from the finest produce in the country & crafted into unique blends that are both flavourful & healthy."

For more information, visit [www.sublimehouseoftea.com](http://www.sublimehouseoftea.com) or email: [marketing@sublimehouseoftea.com](mailto:marketing@sublimehouseoftea.com)





GALLERIA  
8TH FLOOR  
UB CITY

Vittal Mallya Road, Bangalore - 560 001  
Email: [sublime@prestigeconstructions.com](mailto:sublime@prestigeconstructions.com)  
[www.sublimegalleria.com](http://www.sublimegalleria.com)

Let's connect on Instagram!



EXPERIENCE OUR COLLECTION ACROSS:

**Sublime**  
INSPIRING AWE  
GALLERIA  
PRESTIGE SKY TECH  
HYDERABAD

**CONRAD**  
BENGALURU

  
**JW MARRIOTT**  
BENGALURU PRESTIGE GOLFSHIRE  
RESORT & SPA