

Sublime
INSPIRING AWE

GALLERIA
8TH FLOOR
UB CITY
Invites you

Charcoal in Stillness and Motion

From Stillness to Motion – A Journey of Expression by Gautam Bansal



Opens on Friday **8th August , 2025**
Closes on **7th September, 2025**



Sublime Galleria
8th Floor UB City, Bangalore



+91 81473 76032



www.sublimegalleria.com

Scan to know more



Sublime

INSPIRING AWE

GALLERIA

8TH FLOOR

UB CITY



Bangalore's Gallery in the sky

Sublime Galleria is a professionally managed, dynamic meeting ground for upcoming artist, art connoisseurs and collectors. Our artists represent a cross section of styles, medium, techniques and forms, which together define the artistic sensibilities that are evolving today. Sublime is on a mission to further the cause of the arts and also sees itself as a dynamic crucible for the next generation to develop and showcase their talent. Sublime reaches out to upcoming artists and offers them a great platform to showcase their talents and make their body of work accessible to Bangalore art community.

We also organize regular workshops for children in various creative and artistic field which include Visual Arts, Theatre, Music, Dance and more. Our recent initiative Sublime Art Ed empower schools and teachers to inspire creativity in children. Sublime Art Ed wants to see an India where every child's creativity is nurtured through the arts.

Sublime also conducts Art Bengaluru, the city's largest art festival featuring a diverse and international selection of art and artists. The latest edition featured over 20 artists and consulates from all over India. Please see the last page for more information.

About the Artist – Gautam Bansal



Artist Bio

Gautam Bansal is a Bengaluru-based artist whose creative journey spans over two decades of working with charcoal. With a background in Art & Design and years in the corporate world, he eventually left that path to pursue a full-time life in art—driven by a deeper need for expression, sincerity and connection.

His works—often quiet, yet deeply evocative—have been featured in premier art festivals including the India Art Festival and Mumbai Art Fair, and are part of notable private collections across India. Some of

his pieces have been curated by prominent public figures and showcased at exclusive events.

Gautam's presence in over 30 exhibitions and his continued recognition through awards and features reflect an artist committed to steady growth and expressive depth. As a guest faculty at a school for autism, he conducts weekly charcoal workshops, offering art as a language of connection and self-expression.

Artist Statement

Charcoal gives me space to strip things down—to explore not just form, but feeling. I'm drawn to the threshold where stillness becomes motion, where something undefined begins to take shape. This is where my work lives.

Whether I'm channelling the force of a galloping horse, the quiet presence of a dancer, or the texture of a human face, I'm always searching for that moment when something shifts—when an image breathes.

Nature moves through my work not only as subject but as metaphor: animals, storms, wind, water and the human spirit, all shaped by unseen currents. I embrace the imperfect, the unfinished, the emotionally vulnerable. Each piece holds space for what's in-between—between clarity and blur, power and poise, exposure and restraint.

In a fast world, I hope my work invites viewers to slow down, feel more and find something of themselves in the quiet pulse of charcoal.



Still in Motion

Charcoal & Gold Highlights on Linen Canvas

H.36, W.25 inches

INR 1,55,232/-

A horse form takes shape between clarity and blur. Caught in a moment of becoming, it holds its ground even as it shifts. Movement and stillness meet — not in contrast, but in quiet accord.



Unrelenting
Charcoal & Gold Highlights on Linen Canvas
H.36, W.25 inches
INR 1,59,936/-

The bull emerges — steady, composed and deeply grounded. Its motion is not a charge but a deliberate act of will. In the space between tension and stillness, its spirit holds firm. Power, here, is silent but unmistakable.



Elephant Whispers

Charcoal on Heavyweight White Paper

H.37, W.29 inches (premium anti-glare glass)

INR 1,31,712/-

The elephant stands — immense, yet unassuming. Its presence speaks not in thunder, but in quiet weight. Between memory and moment, a hush lingers. Strength, here, is gentle — felt more than seen.



White Tiger in Red

Mixed media on Heavyweight White Paper
H.38, W.30 inches (premium anti-glare glass)

INR 1,39,552/-

The white tiger waits — alert, contained, and alive beneath the surface. Red gathers around it, not as fury, but as presence. Between the quiet of stillness and the edge of instinct, something holds. It does not roar — it watches.



Silent Strength

Charcoal & Gold Highlights on Paper

H.33, W.26 inches (premium anti-glare glass)

INR 67,424/-

The horse emerges — quiet, assured, and just beyond full reveal. Its presence isn't forced; it rests in its own weight. In the hush of the moment, its stillness speaks. What isn't said holds the most.



Koi

Mixed Media on Paper

H.25, W.31 inches (premium anti-glare glass)

INR 70,560/-

The koi drift — neither hurried nor still, moving with quiet intent. Their path isn't direct, yet always certain. Beneath the surface calm, a quiet persistence flows. Grace, here, is a kind of resolve.



Boundless
Charcoal & Gold Highlights on Paper
H.28, W.32 inches
INR 67,424/-

The horse lifts — caught mid-leap, suspended beyond constraint. It does not flee, it ascends. Between muscle and motion, it breaks free of gravity's claim. Freedom, here, is not escape but essence.



Vitality

Charcoal & Pastels on Paper

H.25, W.30 inches (premium anti-glare glass)

INR 61,152/-

The buffaloes surge — not with haste, but with purpose. Their rhythm is ancient, their presence unwavering. In the dust they raise, there is no chaos — only the pulse of life moving forward. Strength, here, is collective and enduring.



Through the Storm

Charcoal & Pastels on Heavyweight White Paper

H.36, W.27 inches (premium anti-glare glass)

INR 1,12,896/-

The horse charges forward — not away from the storm, but into it. Winds gather, the ground blurs, but its stride does not falter. Strength here is not loud or reckless — it is clear-eyed, unwavering and earned in motion.



Dance with Destiny

Charcoal & Pastels on Paper

H.18, W.25 inches (premium anti-glare glass)

INR 25,088/-

The Wildebeest herd moves as one — instinct over reason, rhythm over thought. Each step is urgent, yet part of something ancient and known. In this convergence of fear, purpose and flow, survival itself becomes a choreography.



Amarosa

Mixed Media on Heavyweight White Paper

H.22, W.31 inches

INR 51,744/-

The bull stands at the centre of a layered world — ancient, playful, defiant. Around it, time flickers: fragments of past, myth, memory. Its gaze holds steady, aware of the watching eyes, yet answering only to its own rhythm.



Loyal Gaze
Charcoal & Pastels on Paper
H.23, W.19 inches
INR 21,952/-

The dog watches — calm, alert, and unwavering. It doesn't move, but nothing escapes its attention. In the quiet presence of that gaze lies a bond unspoken. Loyalty, here, is not claimed — it's lived.

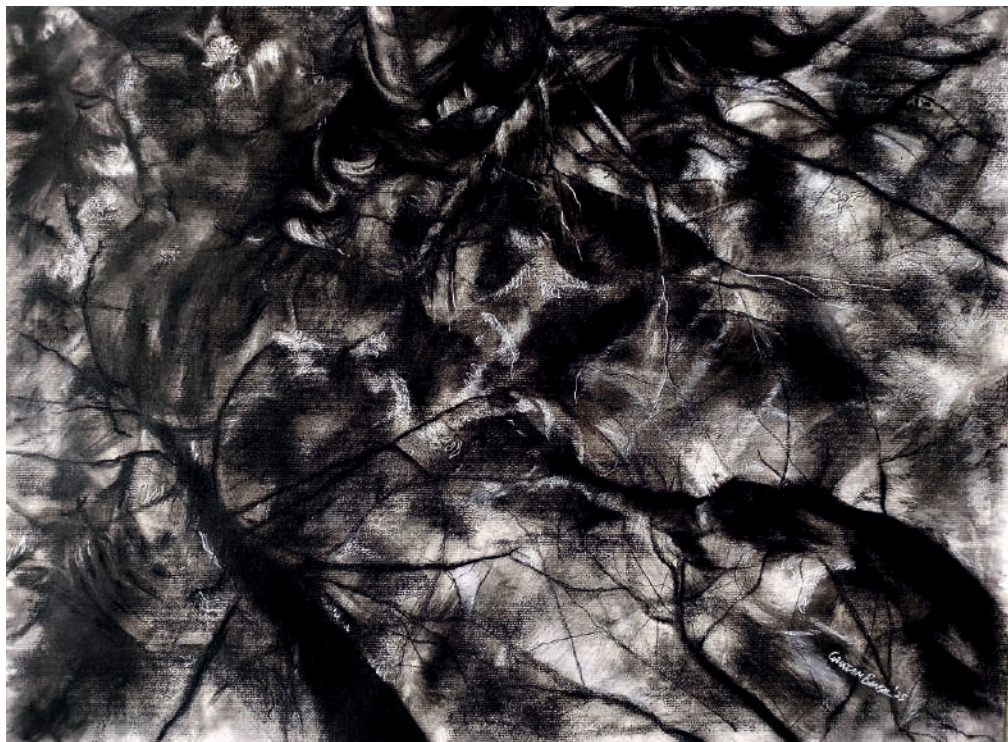


Winds of Resolve
Charcoal on Paper

H.31, W.24 inches (premium anti-glare glass)

INR 68,992/-

The sailboat leans into the gust — not resisting, but aligning. In every pull of canvas and ripple of water, intention holds steady. Amid the shifting sea, it isn't force that leads — it's quiet determination that finds the way.



Through the Canopy

Charcoal on Paper

H.26, W.31 inches (premium anti-glare glass)

INR 65,856/-

Branches stretch and fold into one another, catching fragments of light. There's no clear path, only shifting impressions. What lies above or beyond is uncertain — and maybe that's the point.



Unseen Forces

Charcoal on Paper

H.32, W.25 inches (premium anti-glare glass)

INR 64,288/-

Something stirs — not in form, but in feeling. Flowing without a path, shifting without sound. What's held in shadow moves us still. In absence of shape, presence gathers.



Bloom

Charcoal on Paper

H.26, W.32 inches (premium anti-glare glass)

INR 70,560/-

The flower unfolds — not in haste, but in quiet insistence. Each petal, a trace of presence, each curve, a movement held. What begins in stillness finds its way into form. Beauty, here, is not shown — it arrives.



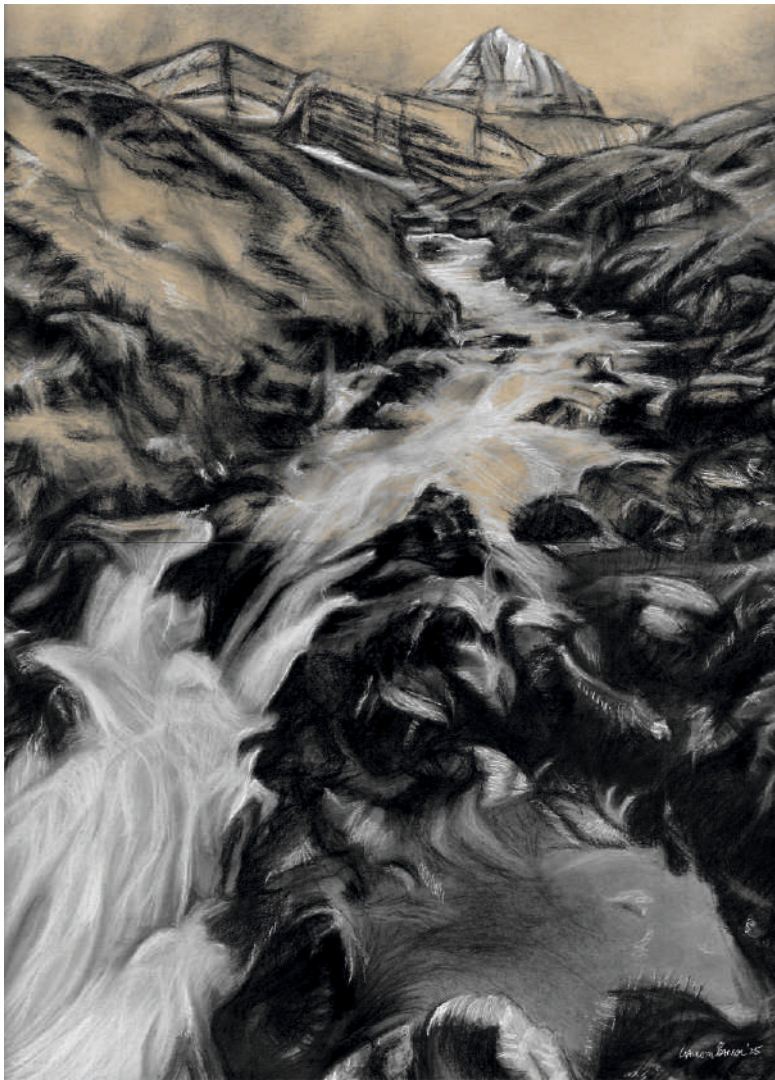
Chaos and Calm

Charcoal on Paper

H.25, W.31 inches (premium anti-glare glass)

INR 68,992/-

The sea swells — fierce, unyielding — yet within the surge, something steadies. Light breaks through the dark, not to end the storm but to dwell alongside it. Between collision and stillness, a quiet knowing holds. This is not peace after chaos, but peace within it.



Eternal Flow

Mixed Media on Paper

H.32, W.25 inches (premium anti-glare glass)

INR 64,288/-

The river moves — not in haste, but with quiet certainty. It yields, yet never wavers. Around each bend, through stone and silence, its path unfolds. Change, here, is not sudden but constant. What endures is not the shape, but the motion.



Journey

Charcoal on Paper

H.20, W.24 inches (premium anti-glare glass)

INR 28,224/-

The path unfolds — quiet, unmarked and deeply familiar. Two figures move in silence, not hurried, not lost. Between them, a rhythm — of trust, of distance, of quiet knowing. In the hush of the forest, direction is less about destination and more about being.



Jashn (Celebrations)

Charcoal & Pastels on Heavyweight Black Paper

H.40, W.31 inches (premium anti-glare glass)

INR 1,64,640/-

The dancer turns — wrapped in rhythm, veiled in grace. Her motion blurs the line between body and spirit, presence and trance. What begins as movement becomes celebration. Joy, here, flows not from sound, but from stillness set free.



Grace
Charcoal on Paper
H.27, W.22 inches
INR 51,744/-

The dancer unfolds — not in haste, but in quiet command. Motion gathers and releases in soft arcs, as if drawn from breath itself. Between presence and disappearance, her form suspends the moment. Here, grace is not display — it is surrender.



Fluid Beauty
Mixed Media on Heavyweight White Paper
H.19, W.19 inches
INR 26,656/-

The dancer arcs through space — weightless yet grounded. Her motion isn't rushed, but woven from silence and breath. In the folds of stillness, something shifts — not just form, but feeling. Movement here is less about steps and more about becoming.



Ethereal Essence

Charcoal & Pastels on Paper

H.29, W.23 inches (premium anti-glare glass)

INR 29,792/-

The dancer appears — not as form alone, but as presence in motion. Her body moves, yet it is the space around her that begins to stir. Light gathers at the edges, dissolving boundaries between flesh and feeling. What remains is a trace — weightless, fleeting and quietly alive.



Sisters

Pastels & Charcoal on Heavyweight Black Paper

H.26, W.28 inches (premium anti-glare glass)

INR 29,792/-

They turn together — not in perfect symmetry, but in shared rhythm. Laughter flickers at the edges, unseen but deeply felt. In their motion, there's memory, mischief and something unspoken. Connection, here, is not declared — it simply exists.



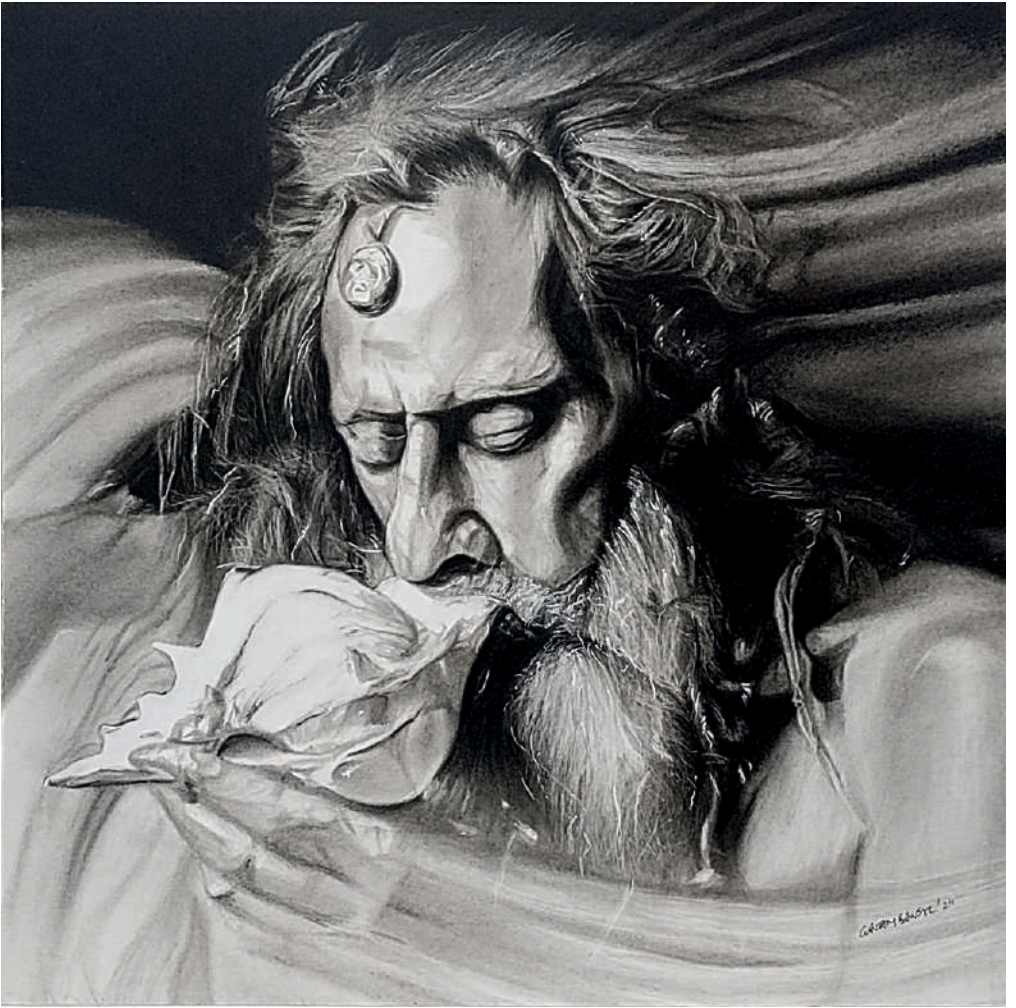
Allure

Charcoal on Paper

H.30, W.24 inches (premium anti-glare glass)

INR 64,288/-

The woman rests — withdrawn yet present, her form quiet in its strength. With her head bowed and eyes closed, she holds a stillness that doesn't hide but reveals. Grace and solitude meet here, not to retreat, but to endure — softly, completely.



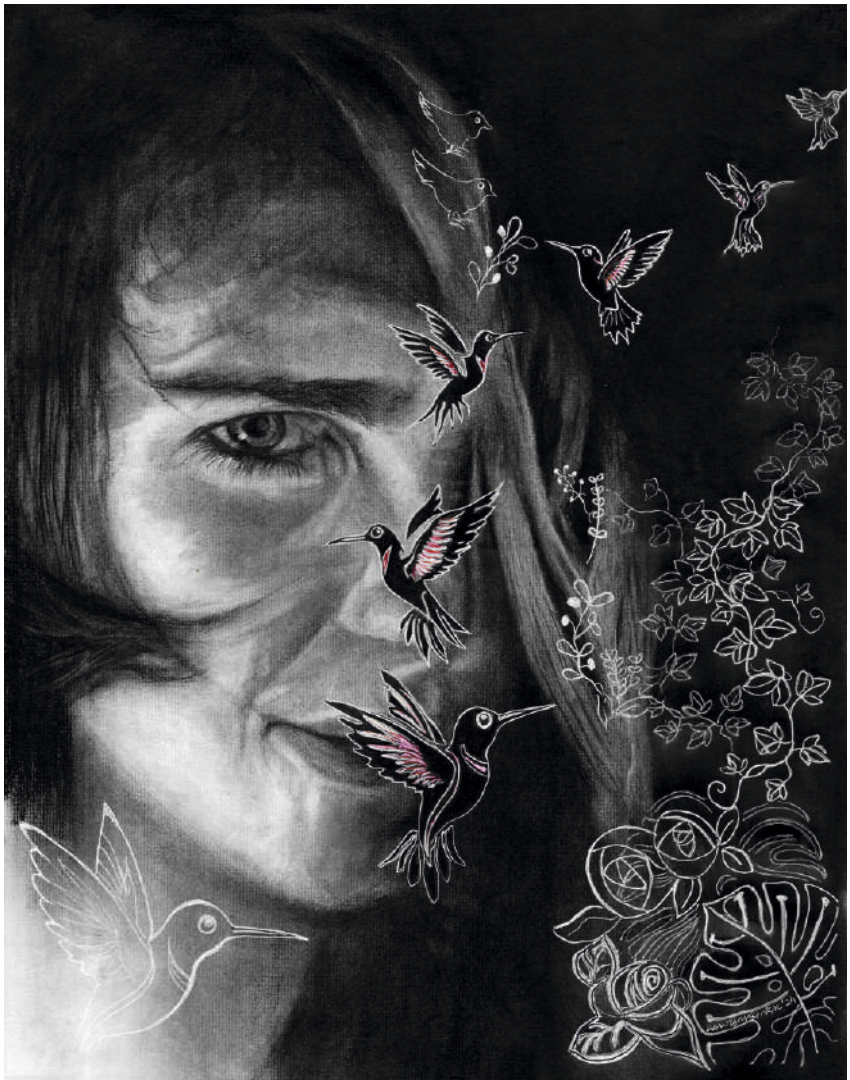
Shubharambh (Auspicious Beginning)

Charcoal on Heavyweight White Paper

H.28, W.28 inches (premium anti-glare glass)

INR 1,12,896/-

The conch is raised — not as ritual, but as a quiet call. Its breath awakens space, stirs memory and marks a beginning. In the stillness that follows, something shifts — the sacred and the everyday draw closer and the moment becomes the threshold.



Amidst Nature

Mixed Media on paper

H.29, W.24 inches (premium anti-glare glass)

INR 51,744/-

She stands quiet, wrapped in the rhythm of leaves and wings. The air stirs with life — a flicker, a flutter — yet nothing feels hurried. Nature doesn't surround her; it moves with her. In this still moment, renewal begins.



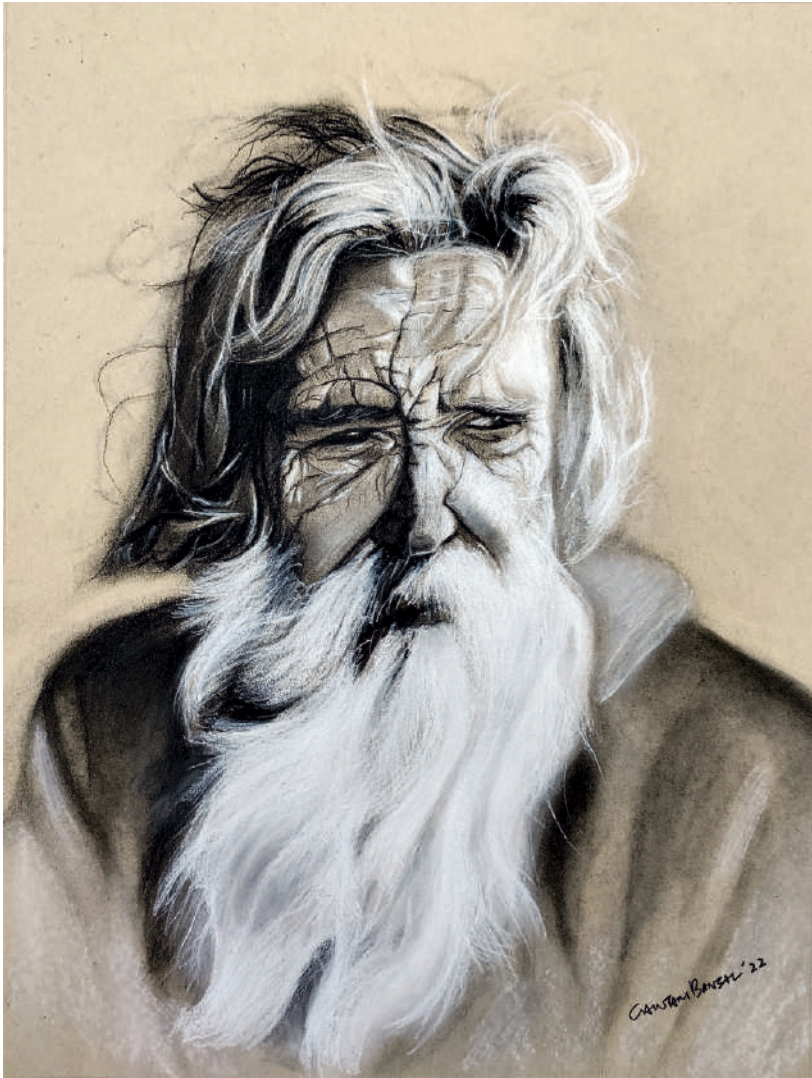
Duality

Mixed Media on paper

H.24, W.19 inches (premium anti-glare glass)

INR 28,224/-

One face, two forces. The visible and the veiled exist not in conflict, but in quiet alliance. Between fire and flight, form and fade, something steadier holds — a crown not worn but understood.



Oldie
Charcoal & Pastels on Paper
H.20, W.16 inches
INR 21,952/-

The elder appears — not with grandeur, but with the quiet presence of one who has endured. Lines deepen, not as marks of age, but as maps of becoming. In the hush of his gaze, time settles, unhurried and whole.



Face of Evolution

Charcoal on Heavyweight White Paper

H.25, W.24 inches

INR 39,200/-

Two visages merge — primal and human, ancient and becoming. In their quiet fusion lies the story of all of us. Not a split, but a continuum. Time speaks not in leaps, but in echoes. What we are was once becoming — and still is.

Art Commissioning Services



Sublime Galleria also offers premium curation and commissioning services tailored for retail, residential, commercial, and hospitality clientele. With over a decade of expertise in the art industry, we have built a vast global network of talented artists, carefully selected to deliver bespoke and highly customizable solutions. Whether it's a large-scale commercial project or an intimate residential setting, we bring artistic visions to life with precision, creativity, and a deep understanding of our clients' unique requirements.

Our end-to-end art solutions encompass everything from curation, concept development, and proposal generation to project budgeting, artist selection, production, framing, logistics, warehousing, installation, and content creation-ensuring the highest standards of artistic excellence.

Some of our latest works include JW Marriott Bengaluru Prestige Golfshire Resort & Spa, The Sheraton Grand Hotel and Convention Center Whitefield, Mulberry Shades Bengaluru Nandi Hills, A Tribute Portfolio Resort, Moxy Bengaluru Airport Prestige Tech Cloud, The Artiste Kochi, A Tribute Portfolio Hotel etc.

For more information, call us at +91 81975 54006 or drop an enquiry!

Sublime House Of Tea

Sublime House of Tea has turned tea-drinking into a coveted experience for its steadily growing clientele by presenting perennial favourites like Darjeeling tea, Assam tea and Earl Grey tea that cater to traditionalists, as well as delightful flavours like Jasmine Mandarin, Oolong White Grapes and Rooibos Vanilla Spice that have garnered the loyalty of experimentalists. The brand has established itself as one of the leading curators of distinctive tea variants and creative infusions in India, and has also found its way to cups and hearts beyond. Sublime House of Tea is a part of the Prestige Group, a name that is synonymous with luxury and has been instrumental in redefining the concept of lifestyle in India.



Why Sublime?

Spurred by her desire to showcase the finest in lifestyle, visionary Ms. Uzma Irfan, Executive Director at the Prestige Group, and Founder of Sublime, UB City, Bangalore, masterminded Sublime House of Tea in 2013. Uzma has a degree in Business Administration from the American Intercontinental University, London, and has been at the forefront of several Prestige Group enterprises that have earned global acclaim and respect. Her keenness in promoting traditionally sound yet innovative ideas is apparent from the Sublime House of Tea. "The idea was to bring different kinds of world tea to an Indian consumer's tea cup", says Uzma. "Most Indian kitchens are now open to experimenting beyond the traditional masala chai! Our teas are curated from the finest produce in the country & crafted into unique blends that are both flavourful & healthy."

For more information, visit www.sublimehouseoftea.com or email: marketing@sublimehouseoftea.com



GALLERIA
8TH FLOOR
UB CITY

Vittal Mallya Road, Bangalore - 560 001
Email: sublime@prestigeconstructions.com
www.sublimegalleria.com

Let's connect on Instagram!



EXPERIENCE OUR COLLECTION ACROSS:

Sublime
INSPIRING AWE
GALLERIA
PRESTIGE SKY TECH
HYDERABAD

CONRAD
BENGALURU


JW MARRIOTT
BENGALURU PRESTIGE GOLFSHIRE
RESORT & SPA