



Sublime
INSPIRING AWE

GALLERIA
8TH FLOOR
UB CITY

Invites you

Silent
Impressions
by Simran Nigam



Opens on Friday **10th July, 2026**

Closes on **9th August, 2026**



Sublime Galleria
8th Floor UB City, Bangalore



+91 81473 76032



www.sublimegalleria.com

Scan to know more



Sublime

INSPIRING AWE

GALLERIA
8TH FLOOR
UB CITY



Bangalore's Gallery in the sky

Sublime Galleria is a professionally managed, dynamic meeting ground for upcoming artist, art connoisseurs and collectors. Our artists represent a cross section of styles, medium, techniques and forms, which together define the artistic sensibilities that are evolving today. Sublime is on a mission to further the cause of the arts and also sees itself as a dynamic crucible for the next generation to develop and showcase their talent. Sublime reaches out to upcoming artists and offers them a great platform to showcase their talents and make their body ofwork accessible to Bangalore art community.

We also organize regular workshops for children in various creative and artistic field which include VisualArts, Theatre, Music, Dance and more. Our recent initiative Sublime Art Ed empower schools and teachers to inspire creativity in children. Sublime Art Ed wants to see an India where every child's creativity is nurtured through the arts.

Sublime also conducts Art Bengaluru, the city's largest art festival featuring a diverse and international selection of art and artists. The latest edition featured over 20 artists and consulates from all over India. Please see the last page for more information.

About the Artist – Simran Nigam



Originally from Dehradun and currently based in Bangalore, I am a Furniture Designer by day and an aspiring artist by night. While my professional background is rooted in design, my true passion lies in the intersection of fine art and tactile craftsmanship.

My current practice focuses on hand-engraved engineered wood (MDF/HDF), which I finish with intricate painting to create pieces that offer a unique sensory experience. By combining deep textures with layered visuals, I aim to create work that invites the audience to engage both visually and physically.

Creating this art, helps me get in touch with my inner most feelings and face my inhibitions. The art helps me translate my emotions and give them a tangible form. Each art piece holds a certain memory of mine. They are never a direct translation into an illustration but rather depict the journey, effort and unique feeling I felt while making the artwork. The artwork holds a mirror in front of me, helping me face the emotions I have avoided and escaped during the day.

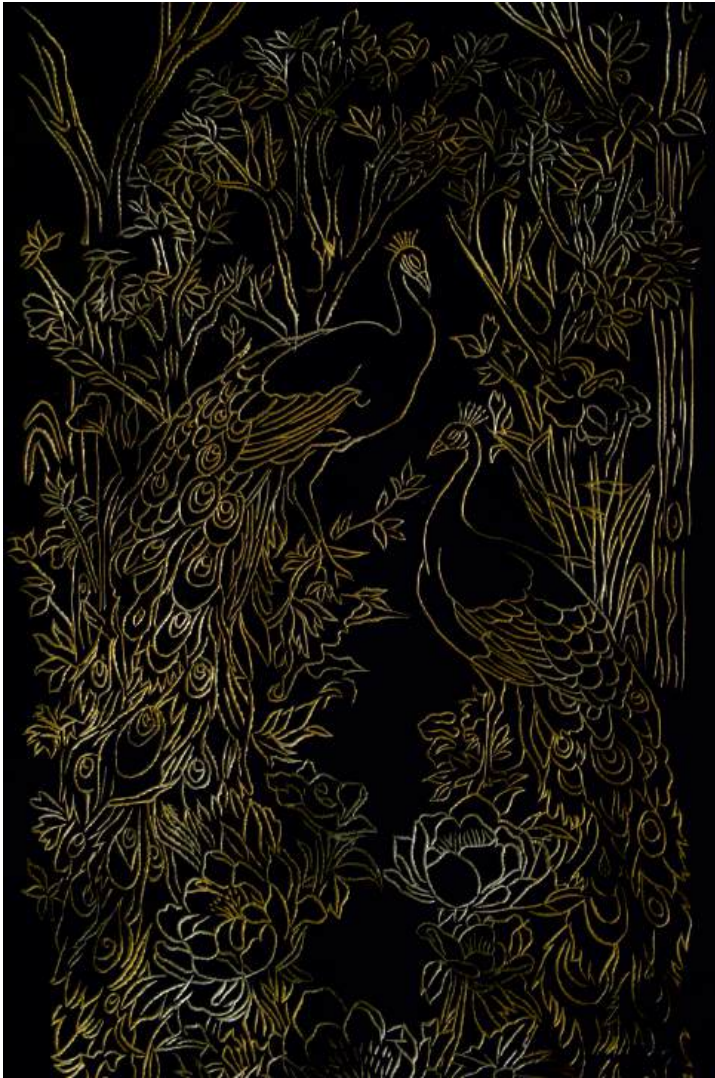
It is truly exciting to be able to showcase my work at the renowned Sublime Galleria to be one of the first artists in Bangalore to be experimenting with this art style and technique.

About the Show – Silent Impressions

Shunning the fluid ease of gentle brushwork, the practice relies on an arduous, deeply tactile process of relief carving. Every line is born from exacting force; a vigorous, physically demanding dialogue between a sharp chisel, heavy strength, and the stubborn resistance of the material. There lies a beautiful irony here, the technique seems so aggressive, but the outcome is ornate.

Personally, inspiration isn't gathered from the outside; it's uncovered from within, rising from those quiet, tucked-away corners of the subconscious. The world around us simply acts as a catalyst, a spark that triggers the imagery already waiting to flash before our eyes. This collection is an exploration of those internal landscapes, shaped by themes that have always held a natural pull over me.

It is deeply rooted in the breathing world, drawing from the effortless grace of real-world flora and fauna, while gently stepping into the realm of the mythical. Rather than mere fantasy, these intricate creatures and natural forms feel like a shared, symbolic language—expressions of wonder kept safe in the mind. Ultimately, the artwork becomes a space where our surroundings meet an inner wilderness, turning the subtle whispers of the subconscious into something we can finally see and touch.



Name : Paravani's Rest

Medium : HDF (High Density Fiberboard)
carved with a Chisel, finished with layered Paint Media

Size : 26" X 42"

Price : Rs 73,500/-



Name : Shogun: Death before Dishonour
Medium : HDF (Hight Density Fiberboard)
carved with a Chisel, finished with layered Paint Media
Size : 26" X 26"
Price : Rs 45,570/-

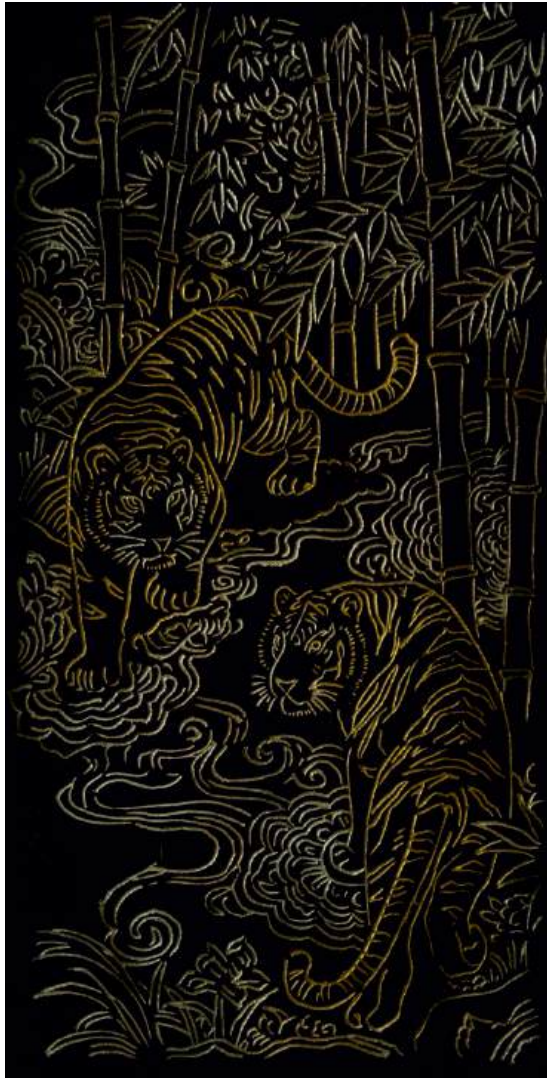


Name : Obsidian

Medium : HDF (High Density Fiberboard)
carved with a Chisel, finished with layered Paint Media

Size : 26" x 49"

Price : Rs 92,610/-



Name : Prowling in Gold

Medium : HDF (High Density Fiberboard)
carved with a Chisel, finished with layered Paint Media

Size : 14" X 26"

Price : Rs 45,570/-



Name : Draco

Medium : HDF (High Density Fiberboard)
carved with a Chisel, finished with layered Paint Media

Size : 26" X 49"

Price : Rs 88,200/-



Name : Spotted Spirits

Medium : HDF (High Density Fiberboard)
carved with a Chisel, finished with layered Paint Media

Size : 26" X 14"

Price : Rs 44,100/-



Name : Flamboyance

Medium : HDF (High Density Fiberboard)
carved with a Chisel, finished with layered Paint Media

Size : 26" X 26"

Price : Rs 36,750/-



Name : Alpha

Medium : HDF (High Density Fiberboard)
carved with a Chisel, finished with layered Paint Media

Size : 26" X 26"

Price : Rs 44,100/-



Name : Watering Hole Conversations

Medium : HDF (High Density Fiberboard)

carved with a Chisel, finished with layered Paint Media

Size : 26" X 26"

Price : Rs 36,750/-



Name : 5 Years of Grace

Medium : HDF (High Density Fiberboard)
carved with a Chisel, finished with layered Paint Media

Size : 26" X 26"

Price : Rs 49,980/-



Name : In her Shadow

Medium : HDF (High Density Fiberboard)
carved with a Chisel, finished with layered Paint Media

Size : 26" X 26"

Price : Rs 30,870/-



Name : Zen Waters

Medium : HDF (High Density Fiberboard)
carved with a Chisel, finished with layered Paint Media

Size : 26" X 26"

Price : Rs 35,280/-



Name : Contours of Consciousness

Medium : HDF (High Density Fiberboard)
carved with a Chisel, finished with layered Paint Media

Size : 26" X 26"

Price : Rs 41,160/-



Name : Born to be Wild

Medium : HDF (High Density Fiberboard)
carved with a Chisel, finished with layered Paint Media

Size : 26" X 26"

Price : Rs 35,280/-



Name : Tropical Flight

Medium : HDF (High Density Fiberboard)
carved with a Chisel, finished with layered Paint Media

Size : 26" X 26"

Price : Rs 30,870/-



Name : The Solitary Perch
Medium : HDF (Hight Density Fiberboard)
carved with a Chisel, finished with layered Paint Media
Size : 14" X 26"
Price : Rs 30,870/-



Name : The Feline Gaze

Medium : HDF (High Density Fiberboard)
carved with a Chisel, finished with layered Paint Media

Size : 14" X 26"

Price : Rs 48,510/-

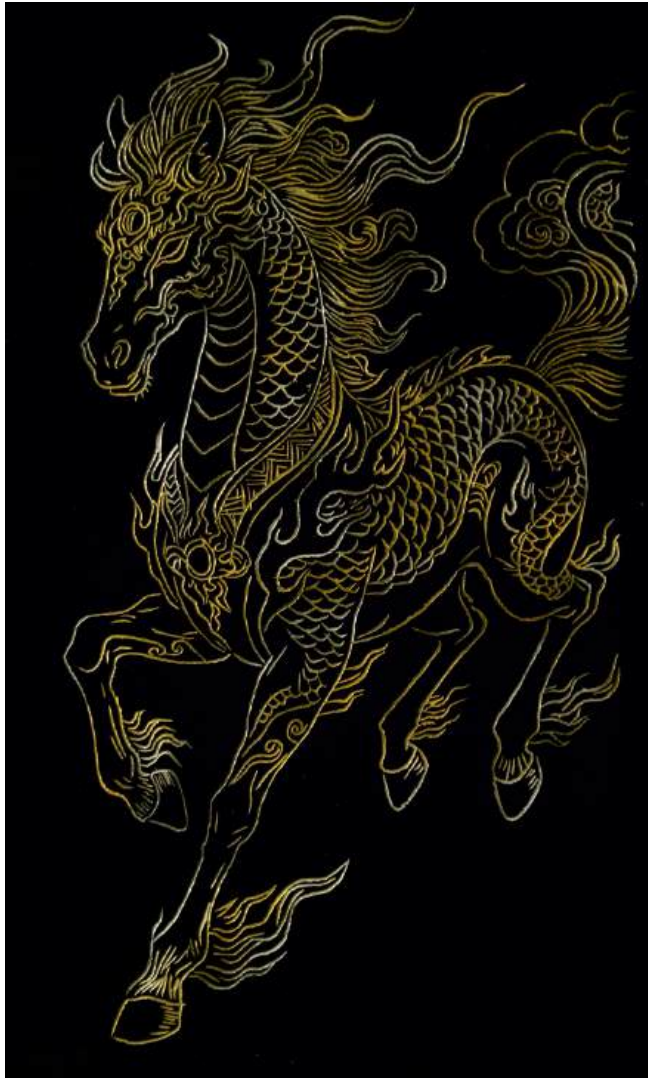


Name : Masai Warrior

Medium : HDF (High Density Fiberboard)
carved with a Chisel, finished with layered Paint Media

Size : 10" X 26"

Price : Rs 23,520/- Each



Name : Gallop of the Fire Horse

Medium : HDF (High Density Fiberboard)
carved with a Chisel, finished with layered Paint Media

Size : 26" X 43"

Price : Rs 70,560/-



Name : Big ears, Bigger hearts

Medium : HDF (High Density Fiberboard)
carved with a Chisel, finished with layered Paint Media

Size : 26" X 26"

Price : Rs 38,220/-

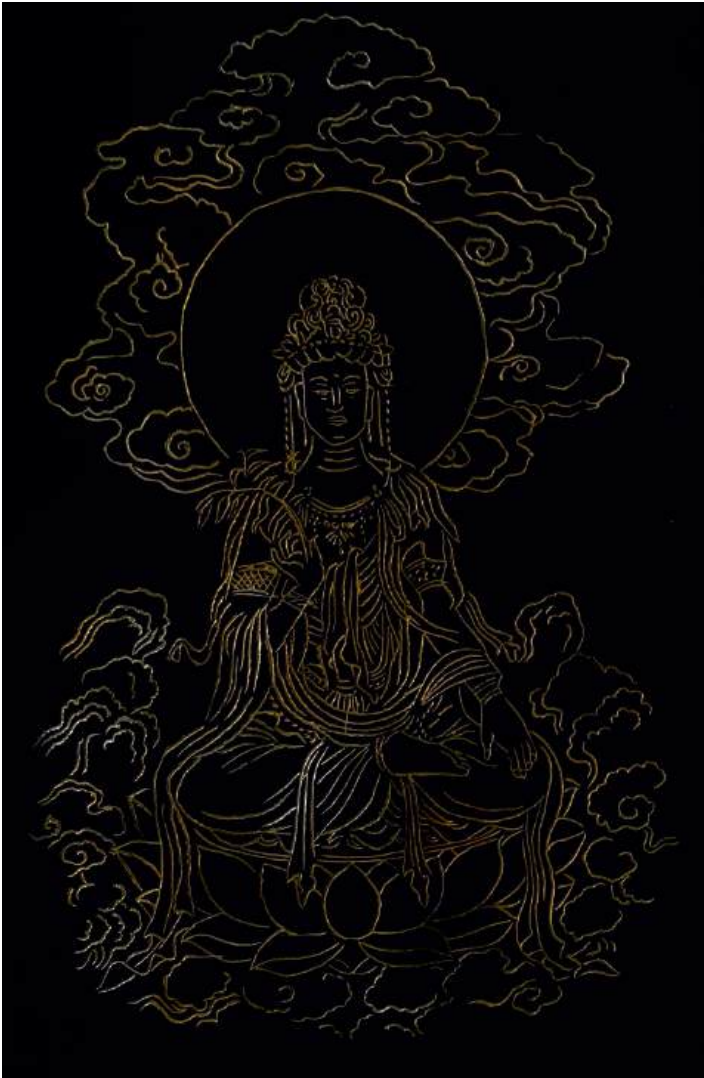


Name : Yaksha: The Demi God

Medium : HDF (High Density Fiberboard)
carved with a Chisel, finished with layered Paint Media

Size : 26" X 37"

Price : Rs 66,150/-



Name : Beyond Samsara

Medium : HDF (High Density Fiberboard)
carved with a Chisel, finished with layered Paint Media

Size : 26" X 36"

Price : Rs 61,740/-

Art Commissioning Services



Sublime Galleria also offers premium curation and commissioning services tailored for retail, residential, commercial, and hospitality clientele. With over a decade of expertise in the art industry, we have built a vast global network of talented artists, carefully selected to deliver bespoke and highly customizable solutions. Whether it's a large-scale commercial project or an intimate residential setting, we bring artistic visions to life with precision, creativity, and a deep understanding of our clients' unique requirements.

Our end-to-end art solutions encompass everything from curation, concept development, and proposal generation to project budgeting, artist selection, production, framing, logistics, warehousing, installation, and content creation-ensuring the highest standards of artistic excellence.

Some of our latest works include JW Marriott Bengaluru Prestige Golfshire Resort & Spa, The Sheraton Grand Hotel and Convention Center Whitefield, Mulberry Shades Bengaluru Nandi Hills, A Tribute Portfolio Resort, Moxy Bengaluru Airport Prestige Tech Cloud, The Artiste Kochi, A Tribute Portfolio Hotel etc.

For more information, call us at +91 81975 54006 or drop an enquiry!

Sublime House Of Tea

Sublime House of Tea has turned tea-drinking into a coveted experience for its steadily growing clientele by presenting perennial favourites like Darjeeling tea, Assam tea and Earl Grey tea that cater to traditionalists, as well as delightful flavours like Jasmine Mandarin, Oolong White Grapes and Rooibos Vanilla Spice that have garnered the loyalty of experimentalists. The brand has established itself as one of the leading curators of distinctive tea variants and creative infusions in India, and has also found its way to cups and hearts beyond. Sublime House of Tea is a part of the Prestige Group, a name that is synonymous with luxury and has been instrumental in redefining the concept of lifestyle in India.



Why Sublime?

Spurred by her desire to showcase the finest in lifestyle, visionary Ms. Uzma Irfan, Executive Director at the Prestige Group, and Founder of Sublime, UB City, Bangalore, masterminded Sublime House of Tea in 2013. Uzma has a degree in Business Administration from the American Intercontinental University, London, and has been at the forefront of several Prestige Group enterprises that have earned global acclaim and respect. Her keenness in promoting traditionally sound yet innovative ideas is apparent from the Sublime House of Tea. "The idea was to bring different kinds of world tea to an Indian consumer's tea cup", says Uzma. "Most Indian kitchens are now open to experimenting beyond the traditional masala chai! Our teas are curated from the finest produce in the country & crafted into unique blends that are both flavourful & healthy."

For more information, visit www.sublimehouseoftea.com or email: marketing@sublimehouseoftea.com

Sublime

INSPIRING AWE

GALLERIA
8TH FLOOR
UB CITY

Vittal Mallya Road, Bangalore - 560 001
Email: sublime@prestigeconstructions.com
www.sublimegalleria.com

Let's connect on Instagram!



EXPERIENCE OUR COLLECTION ACROSS:

Sublime
INSPIRING AWE

GALLERIA
PRESTIGE SKY TECH
HYDERABAD

CONRAD®
BENGALURU



JW MARRIOTT
BENGALURU PRESTIGE GOLFSHIRE
RESORT & SPA